

AMA Building Materials Sector
Solutions & Services



**Ahmed
Mansoor
Al Aali
Group**

A Division of Ahmed Mansoor Al A'ali Group

Chairman's Message



On behalf of the Directors and Management, it is my privilege to present to you AMA Building Materials, a Division of Ahmed Mansoor Al-A'Ali Group of Companies (AMA Group). From our humble beginnings in 1954, the AMA Group has grown and expanded to become one of the leading trading and construction groups in the Kingdom of Bahrain. Today, we are a diversified and fully integrated enterprise covering all major areas of contracting and related manufacturing, equipment supply and real estate development activities.

While we are proud of our business achievements, we would also like to highlight the enduring strengths that we have been able to contribute to the social well-being, business, infrastructural, and economic development of Bahrain. Underlining our success to date and the status and reputation that we now enjoy, are the deep rooted founding principles that have served to guide the Group over the last 60 years.

These govern our personal and professional behavior as well as our business relationships. Looking ahead, we are committed to building upon the firm foundations we have laid seeking yet further growth and prosperity for the benefit of all our stakeholders. I wish to acknowledge the active support and encouragement that we have received from the various Ministries and Government departments of the Kingdom of Bahrain, in achieving remarkable growth and a preeminent position.

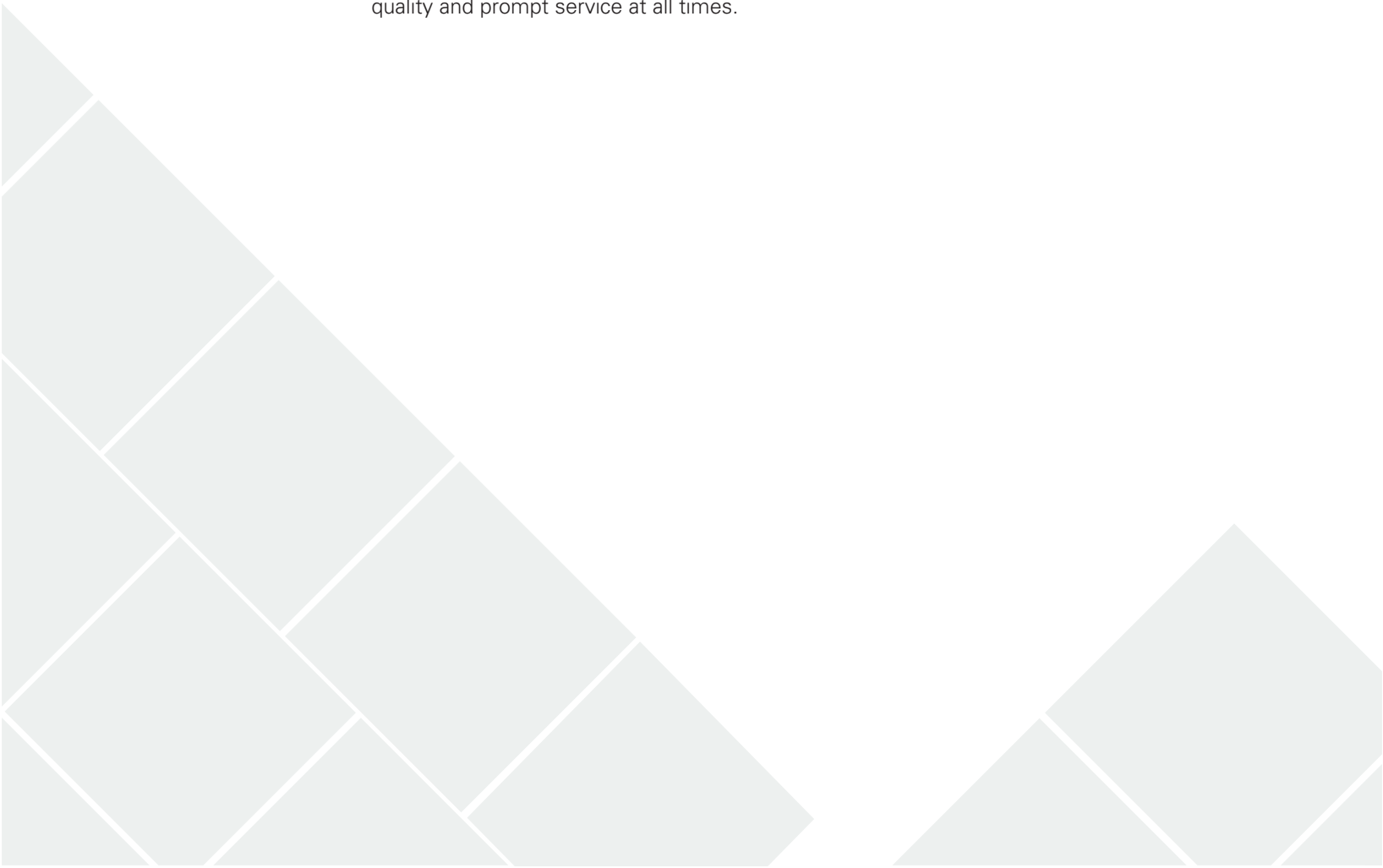
Ahmed Mansoor Al A'Ali
Chairman



Group Corporate Profile

Since its beginnings in 1954, Ahmed Mansoor Al A'ali (AMA Group) has evolved into one of Bahrain's premier business groups active in contracting, manufacturing, real estate, and trading. Employing some 4000 professionals, the AMA Group serves both the public and private sector at the highest level and is widely recognized as the partner of choice. With the objective of delivering our promise and achieving high levels of customer satisfaction, the AMA Group firmly believes it's aim of **BUILDING RELATIONSHIPS BASED ON INTEGRITY AND PERFORMANCE.**

Stemming from perseverance and integrity, the Ahmed Mansoor Al A'ali (AMA Group) has grown from a very modest beginning as a small transportation operation in the late 1940's to a present day dynamic and versatile leader in construction, manufacturing, structural steel fabrication, trading, and real estate serving both the public and the private sectors. Marine works and shutdown maintenance of refinery and petrochemical plants is another sphere of activity the Group excels in. Its strong 4,000 member team is dedicated to ensuring clients quality and prompt service at all times.



AMA Group of Companies



**Ahmed
Mansoor
Al Aali
Group**



Contracting

- Heavy Construction Division
- Middle East Transport & Heavy Equipment Supply
- Petro Chemical Division



Building Materials Sector

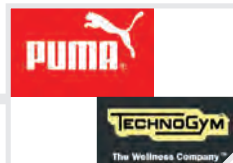
- Al A'Aali Reinforcement
- AMA Scaffolding & Steel Formwork
- Middle East Block Factory
- Middle East Ice & Sweet Water Plant
- Middle East Sand Washing & Crusher Plant



AMA Structural & Mechanical Division



AMA Motors



AMA Sports

- Puma
- Technogym



Joint Ventures

- BPTC
- AMA Allucor



Board of Directors

▶ **Ahmed Mansoor Al A'Ali**
Chairman

▶ **Tawfiq Ahmed Mansoor Al A'Ali**
Vice Chairman

Board Directors

- ▶ Mohammed Ahmed Mansoor Al A'Ali
- ▶ Mansoor Ahmed Mansoor Al A'Ali
- ▶ Maithem Ahmed Mansoor Al A'Ali





Vision

Establish a premier position as an integrated contracting and trading group in Bahrain and also in selected GCC countries.

Mission

To provide the highest quality in all activities of the group to become the preferred choice for our customers and business partners based on integrity and performance.

Our Values

- Striving for excellence in everything.
 - Embracing innovation and managing change.
 - Honouring obligations and delivering on commitments.
 - Acting with integrity at all times.
 - Fostering enduring business partnerships locally, regionally and globally.
 - Fostering a culture of teamwork throughout the organisation.
 - Adopting the highest international standards and global best practices especially in the areas of health and safety.
- 
- 



AMA Building Materials Sector Profile

In 1948, a young Bahraini, Ahmed Mansoor Al A'ali, armed with just one small crusher and a few trucks, embarked upon a journey that was to result in the creation of one of the largest construction groups in the Kingdom of Bahrain.

As his contracting business grew, he realised the need to support his construction activities with his own fabrication shops, manufacturing plants for building materials, and equipment and machinery, rather than relying on external suppliers to meet his company's needs. The core construction and contracting competencies of the AMA Group are now supported by a range of activities that encompass the entire value chain of construction manufacturing and processing.

AMA Building Materials, a Sector of the AMA Group comprises of five Divisions: AMA Reinforcement, AMA Scaffolding, AMA Block, AMA Ice & Sweet Water, and AMA Sand & Crusher. The sector as a whole is the preferred supply partner to Bahrain's construction industry undertaking projects that include multi-storey buildings, road infrastructure, bridges and flyovers projects, airport infrastructure, real estate development, residential complexes and many more. AMA Building Materials boasts a workforce of over 380 professionals dedicated to delivering on customer expectations and providing the highest quality of service.





AMA Building Materials Sector Divisions

● **Al-A'Ali Reinforcement**

Al-A'Ali Reinforcement was launched in 2003. It is the largest Cut and Bend Rebar factory in the region with a factory area of 8,100 square meters, and a production capacity of over 10,000 tons a month.

● **AMA Scaffolding & Steel Formwork**

AMA Scaffolding & Steel Formwork started production in 2004. Today it boasts existing production capacity of 1,200 tons per month and has an abundant scope for expansion should the necessity arise.

● **Middle East Block Factory**

Middle East Block Factory began manufacturing in 1974. Today, it's the largest fully automatic concrete blockmaking factory in the Kingdom of Bahrain.

● **Middle East Ice & Water Plant**

Middle East Ice & Sweet Water Plant began production in 2002. Today, it is the largest water processing plant with a production capacity of 1.6 million US Gallons of water per day & 2,000 ice blocks per day.

● **Middle East Sand Washing & Crusher Plant**

AMA Sand & Crusher's first Crusher plant was purchased in 1971. Today, it's the biggest Sand Washing and Crusher plant in the Kingdom of Bahrain with a capacity of more than 5,000 tons of graded products a day.





Services



Quality

At AMA Building Materials Sector, we are totally committed to achieving and maintaining the highest standards of quality in every area of operation. In addition to our 3 in-house laboratories, our divisions are also certified to International Standards and are focused on meeting customer expectations and delivering customer satisfaction through continuous improvement to assure our customers benefit by receiving products/services that meet their requirement consistently.

Certification

AMA Reinforcement - Quality Management System as per ISO 9001:2015

AMA Scaffolding & Steel Formwork - Quality Management System as per ISO 9001:2015

AMA Block - Integrated Management System (Quality & Environmental) as per ISO 9001:2015 / ISO 14001:2015

AMA Ice & Sweet Water – Quality & Food Safety Management System as per ISO 9001:2015 / ISO 22000:2015.

Sales & Marketing

The Sales and Marketing department pursues several management objectives and strategies, most importantly maintaining AMA Building Materials Sector's reputation as the preferred supply partner to Bahrain's construction industry. AMA Building Materials Sector operates a mobile Sales team from offices in Askar, Mina Salman, and Hafira. Based on this scale and network size our Sales department continuously communicates with our potential customers while maintaining a very high quality of service. Meeting customer requirements and rigorous quality control practices is at the foundation of the entire operation.



Services



Maintenance

The AMA Building Materials Sector Maintenance Division offers a full range of internal services in supporting the smooth operation of plants, machines, and facilities on sites in Askar, Mina Salman, and Hafira. Maintenance services include safety inspections on machinery, conducting regular preventive measures, rectification, and general improvement services across the Building Materials Sector.



Fleet

From just a few trucks in 1948, AMA Building Materials Sector has expanded dynamically to own and operate an extensive operating fleet of 168 vehicles. AMA Building Material Sector's fleet of modern and well-equipped delivery and support vehicles is one of its key assets in upholding AMA Building Materials Sector's reputation as a leading supplier to The Kingdom of Bahrain's Construction Industry.

ITEM	Qty
MAN Truck with Crane	51
MAN Unit	35
Light Vehicle	36
Forklift	16
Wheel Loader	13
Six Wheel	12
Escavator	2
Total Assets	165



Production Facilities

Production Facilities

The AMA Building Materials production facilities cover a total of over 28,100 m² on sites in Askar, Hafeera, and Mina Salman.





AMA DRY-MIX

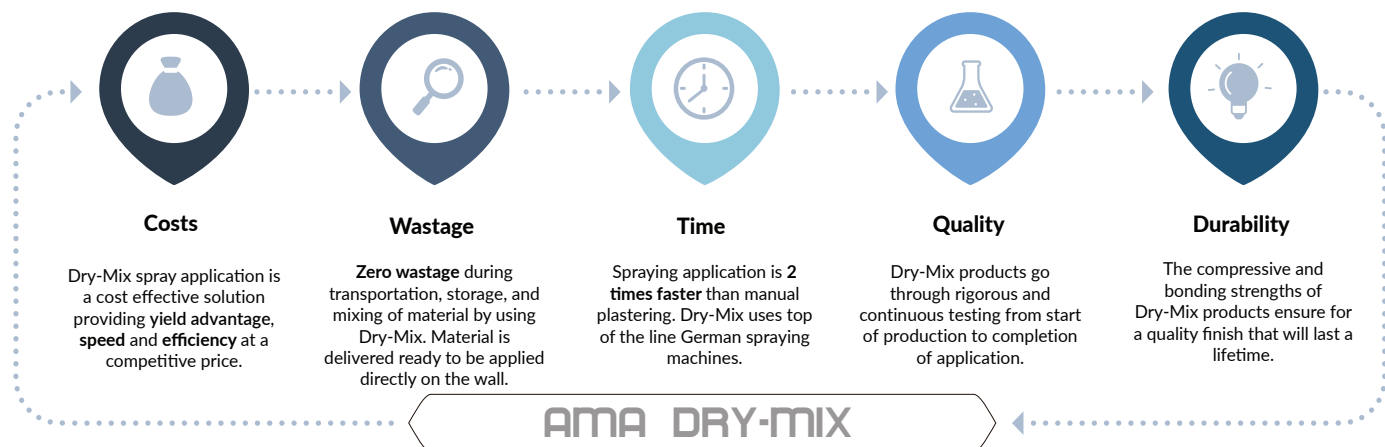
ADM PLASTER MACHINE APPLICATION

AMA Dry-Mix offers the most modern factory mixed plaster application system in Bahrain with the latest German M-Tec DUOMIX application machines. An extension to the wide variety of products already offered by AMA Building Materials, AMA Dry-Mix offers dry-mix products that are ready to apply directly on to the walls on delivery. In addition to the yield, speed, and efficiency gained from using AMA Dry-Mix spray machine application, the quality of factory produced AMA Dry-Mix plaster is much more reliable and productive than site mixed plaster.

Key benefits:

- Machine application ensures the homogeneous and accurate mixing of the dry-mix with water
- Eliminates the errors that can occur with manual mixing, including wastage
- AMA Dry-Mix plaster is smoother, lighter, easier and faster to apply directly on to the walls
- Increased yield coverage with Dry-Mix plaster requiring approximately 50% less material
- Provides a clean, and dust free job site adding more value to health, safety, and the environment

Why AMA Dry-Mix Spray Application?



Suitable Substrates

AMA plaster machine application is suitable for internal and external walls. Levelling spots should be ready and all joints and corners covered with appropriate lath or fiber mesh, if necessary.

- All types of concrete blocks (without Dash Coat)
- All types of fair face concrete walls (with Dash Coat)
- Old block in renovation stage and white blocks (with Dash Coat) - **Recommended**

ماينا
mynā



A product of Ahmed Mansoor Al-Aali

Bahrain's lowest sodium
5 USG bottled water



Composition (mg/L) (approx.)	التركيب الكيميائي (مجمول/لتر) (تقريباً)
TDS	100
PH	7.5
Chloride	50
Calcium	10
Magnesium	12.0
Sodium	7.5
Phosphate	0.1
Sulfate	0.05
Iron	0.01
Strontium	0.01
Copper	0.01
Zinc	0.01
Total Hardness	50

ماينا
mynā

The natural choice of Bahrain

Bottled Drinking Water مياه شرب معبأة

Product of Ahmed Mansoor Al-Aali Co. BSCC



CALL TOLL-FREE
8000 7711

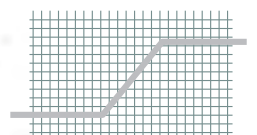
WHATSAPP NO
3733 7711



Al-A'Ali Reinforcement



**Ahmed
Mansoor
Al Aali
Group**



Quality Policy Statement

We at Al-A'Ali Reinforcement Co. W.L.L are fully committed to Fabrication & supply of highest quality products in the form of Straight bars, Cut & bend reinforcement steel, Welded wire mesh, Welded pile cages and threaded couplers for concrete reinforcement to the complete satisfaction of every customer. We are fully committed to consistently meeting our customer expectations and providing the highest quality of service in all our activities related to the supply of reinforcement steel.

We commit ourselves to achieve this by:

Continually improving our processes, products and services in a sustainable manner thereby utilizing the best available manufacturing technologies.

Communicating the policy to employees and other interested parties with emphasis on their individual QMS commitments.

Aim to enhance customer satisfaction by providing value added products and services.

Achieving production commitments on time, within the budget as well as satisfying customer requirements consistently and cost effectively.

The top management is committed to promoting Quality Management System awareness and its understanding throughout the Organization. We are implementing a pro-active Quality Management System for setting and achieving the Quality objectives in line with the strategic direction and context of the organization.

We will adhere and comply with the discipline and standards with respect to Bahrain Ministerial regulations in a socially responsible manner.

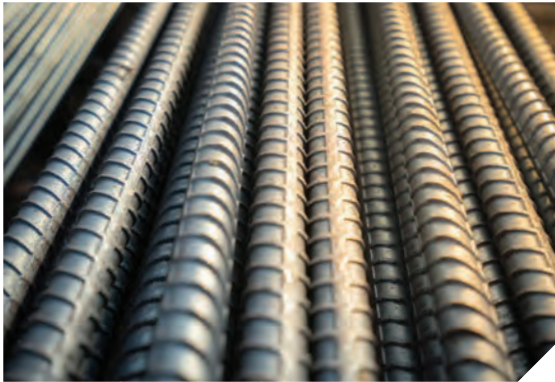
Al-A'Ali Reinforcement About us

Al-A'Ali Reinforcement is a division of Ahmed Mansoor Al-A'Ali Group, which is one of the leading and most successful business groups operating in the Kingdom of Bahrain for over five decades. As a nationally renowned steel reinforcement company with extensive experience in the local market, we deliver world class solutions tailored to client's specific needs. We supply only the highest-grade steel reinforcement products needed for any building project. Efficiency and enhancing technology has always been the basic principle for the group's development.

Launched in the year 2003, Al-A'Ali Reinforcement today is the largest Cut and Bend Rebar factory in the region. Since its commencement and over the past 15 years, Al-A'Ali Reinforcement has established itself as the preferred source for the supply of Steel Reinforcement by the leading contractors in the Construction Industry who demand consistency in quality of products and services. In our effort to pursue innovation and excellence, providing quality products at economic prices, and meeting customer requirements, the company underwent massive expansion in the year 2005 which included the commissioning of a highly sophisticated Welded Wire Mesh plant. The factory is located at the AMA industrial site in Ras Zuwaid with a factory area of 8,100 square meters, and with a production capacity of over 10,000 tons a month.

Al-A'Ali Reinforcement

Our Products & Services



REINFORCEMENT STEEL BARS

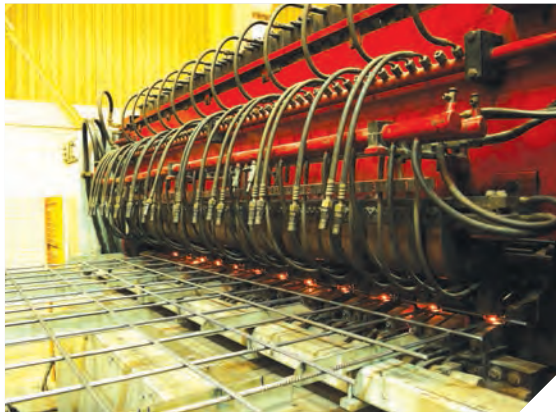
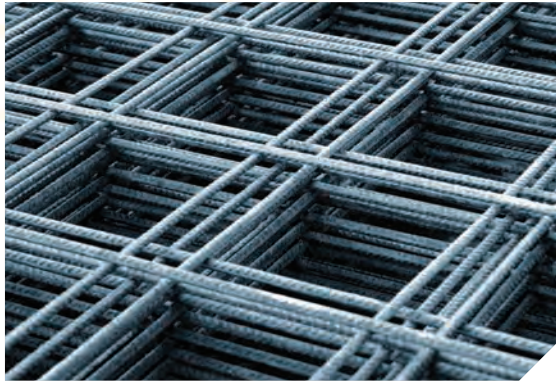
Straight Bar Size:	8mm to 40mm
Standard:	BS 4449 Grade 500 B & ASTM A615
Length:	6 meters to 12 meters



PRE CUT AND BEND
REINFORCEMENT STEEL

Size:	8mm to 40mm
Stirrups:	8mm to 16mm
Standard:	BS 4466/BS 8666:2005
Production Capacity:	10000 Tons/Month

*We provide Rebar detailing services:
[Shop drawings and bar bending shedules]



WELDED WIRE MESH

Wire Range:	4mm to 12mm
Sheet Size:	Max 2.4m x 4.8m*
Spacing:	50mm to 400mm
Standard:	BS 4483
Production Capacity:	5000 Tons/Month

*Customizable upon request: max 2.7 x 6m



WELDED PILE CAGE

Cage Length:	Customized
Cage Diameter:	200mm to 1500mm
Main Bar Dia:	12mm to 40mm
Spiral Diameter:	8mm to 20mm
Production Capacity:	100 Cages/Day



STEEL FIXING

We provide services of on site installation of steel with the added value of highly experienced site Engineers and Supervisors. Our steel fixing capabilities include all forms of RC Work.



BARTEC COUPLERS

Method:	Parallel Splicing
Bar Diameter:	12 mm to 40 mm
Production Capacity	1200 Threads/Day

Al-A’Ali Reinforcement Performance

Economy Through Expertise

By using our expertise gained over time, knowledge of the market and our ability to anticipate and understand, we are today providing timely, efficient, cost effective and above all, quality products & services to the construction industry.

Key Benefits - Cut & Bend Reinforcement

- No wastage of steel for the clients
- Reduced inventory on sites, resulting in less storage space and avoiding rust associated problems
- Rebars are cut & bent to exact specifications, ensuring precision and consistency
- No cutting and bending facilities required, thereby cutting down the extra manpower requirement at site
- Steel is produced and tagged to exact specifications for faster and simpler onsite installation
- Nil exposure to human errors at site - higher level of quality control
- Better accountabilty and traceabilty of materials
- Delivery of any quantity at site when required

Sales and Marketing

The Sales and Marketing department pursues a number of management objectives and strategies, most importantly carrying Al-A'Ali Reinforcement as a reputable, quality conscious and reliable supplier of Reinforcement Steel for the construction industry in Bahrain.

As part of the relentless effort to achieve the objectives, our Sales department continuously communicates with our potential customers and also maintains a very high quality of service. Meeting customer requirements and rigorous quality control practices is at the foundation of the entire operation.



Deformed bars

We are one of the leading stockists and suppliers of Reinforcement steel bars on the island, delivering a diverse range of reinforcement products to the civil, commercial, residential, and industrial construction projects. We supply a wide variety of rebar sizes, grades, and finishes including epoxy coated rebars. Our extensive network of well-established suppliers from around the world enable us to meet specific customer requirements and guarantee prompt deliveries.

All our Reinforcement steel deformed bars are conforming to BS4449 Grade 500B or ASTM A615 Grade 60.

Technical Info

Diameter:

- 8mm
- 10mm
- 12mm
- 16mm
- 20mm
- 25mm
- 32mm
- 40mm

Available in Size: 6 meters and 12 meters length.

Al-A'Ali Reinforcement Cut & Bend Rebars

Methodology

Al A'Ali Reinforcement Co.W.L.L is one of the largest fabricator and installer of cut and bend rebars and related products. Our Factory is built over 8100 square meters and is equipped with automatic production lines from Europe comprising of state of the art machinery that allow us to cut, bend and premanufacture rebar to your exact

requirements while meeting industry standards. All our reinforcement steel is CARES approved and manufactured to British Standards BS 8666/ BS 4466, ensuring the highest standards of material and production quality.

Further, for smooth & efficient execution of manufacturing process, we are backed by a team of Engineers, Supervisors, Foremen, Machine operators and other

technical staff who are qualified and well trained. The product ranges from 8 mm to 40 mm for cut & bend rebars and 8 mm to 16 mm for rebar in coils. Our experienced crew also install reinforcement steel on site according to customer requirements and blueprints.



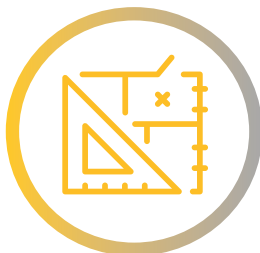
Production Execution

With the latest technology and the new generation machines in operation, comes the realization part under extensive and strict supervision of the Production Department and concurrent Quality Control adhering to British standards BS 4466/ BS 8666 without any compromise in quality.

Our state of the art production facility is equipped with latest machinery operated by trained operators, backed up with a skilled and dedicated maintenance team eliminating any chances of bottle necks in the production affecting the quality of the end products and avoiding possible delays in meeting our committed delivery timings.

Our cut & bend line is equipped with Shearing machines, Double Benders, Single benders, Stirrup benders, Straightening machine and Overhead cranes.

The cut and bend factory works in two shifts, round the clock having a Production capacity of up to 300 Tons per day.



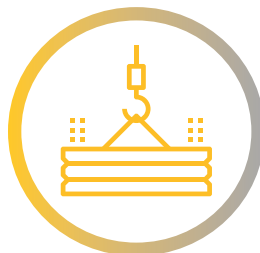
Engineering Drawing Analysis

Our team of experienced engineers study and analyse the drawings elaborately and quantify the total steel requirement for the project by eliminating all possible discrepancies in the drawings, while also proposing possible solutions for steel optimization. We offer a complete scheduling and estimating service so that you can focus on the building project rather than having to worry about the quantity and timing of your steel reinforcement supplies.



Shop Drawing and Bar Bending Scheduling

Our Engineering department comprehensively studies the structural and architectural drawings of each project and segregates them into various stages of work. By coupling our engineering expertise and quality assurance abilities, shop drawings are made on behalf of the main contractor from the given base drawings for each stage of work. The shop drawing elaborates each particular bar with its own identity by a bar mark, diameter, spacing, position and shape. The shop drawing, upon receipt of the consultant's approval, is used for Bar Bending Schedule conforming to BS 4466/BS 8666 explaining details such as member, bar mark, type and size, total numbers, cutting length, and the relevant dimensions. A constant coordination with the contractor/consultant is maintained at all stages of the work to eliminate any possible errors.



Order Execution

Post approval of the Bar bending schedule and call off from the customer, the same is processed in the Production planning software for the following results:

Cutting Optimization list

Production/Cutting list with Machine allocation

Production Tags which provide required information for each bar while cutting and bending with the machine allocation and cutting sequence which also serve as identification on site to locate each bar with reference to the shop drawing.

List of our current machine manufacturers—

Stema Pedax
Germany, Denmark

EVG
Austria

Schnell
Italy

OSCAM
Italy

STREET
England





Al-A'Ali Reinforcement

Welded Wire Mesh

Methodology

Al-A'Ali Reinforcement in the pursuit of innovation and excellence has moved on a step further to success and recognition with the advent of the new Wire Mesh plant. The Wire Mesh factory is equipped with the most advanced fully automatic machinery, the most sophisticated and the largest in the Middle East in terms of capacity. Every stage of production is done under the supervision of highly qualified and technically experienced personnel with scientific production procedures under strict Quality Control system. The production line is facilitated with two Cold Rolling lines from TEUREMA, Spain and a Wire Mesh Welder from EVG, Austria and two overhead cranes of 10 Ton capacity each to facilitate uninterrupted production.

Technical Info

Welded Wire Mesh

Wire range 4mm –12mm
Cold Rolled Wire conforming to BS 4482

Maximum Sheet Size
6000mm x 2750mm

Standard BS 4483
Standard for steel fabric for reinforcement of concrete

Production Capacity 100 Tons/Day

STANDARD WIRE MESH SHEETS SIZE 4.8M X 2.4M WIDE								
Fabric Reference	Longitudinal Wires			Transverse Wires			Mass (Kg/m2)	Mass of one sheet 4.8 x 2.4m (Kg)
	Nominal Wire Size (mm)	Pitch (mm)	Area (mm2/m)	Nominal Wire Size	Pitch (mm)	Area (mm2/m)		
SQUARE MESH								
A393	10	200	393	10	200	393	6.16	70.963
A252	8	200	252	8	200	252	3.95	45.504
A193	7	200	193	7	200	193	3.02	34.790
A142	6	200	142	6	200	142	2.22	25.574
STRUCTURAL MESH								
B1131	12	100	1131	8	200	252	10.9	125.568
B785	10	100	785	8	200	252	8.14	93.773
B503	8	100	503	8	200	252	5.93	68.314
B385	7	100	385	7	200	193	4.53	52.186
B283	6	100	283	7	200	193	3.73	42.970
B196	5	100	196	7	200	193	3.05	35.136
LONG MESH								
C785	10	100	785	6	400	70.8	6.72	77.414
C636	9	100	636	6	400	70.8	5.55	63.936
C503	8	100	503	5	400	49	4.34	49.997
C385	7	100	385	5	400	49	3.41	39.283
C283	6	100	283	5	400	49	2.61	30.067

Note: Any other non-standard size also can be made based on specific requirements of the customer



Raw Material

Raw materials such as Plain Hot rolled low carbon steel in the form of coils, conforming to SAE 1018/1008 is imported from leading suppliers across the world.

Cold Rolling

The factory is equipped with the two latest cold rolling lines from TEUREMA, Spain capable of cold rolling plain hot rolled carbon steel to the required diameter with standard rib pattern complying to BS4482 at a speed as high as 12 m/s with a production capacity of 75 Tons of cold rolled wires per day.

Every stage of production is under strict supervision of experienced engineers and Quality personnel to ensure the best quality. Random samples are taken from each batch for in-house testing in the laboratory for the mechanical properties as per BS 4482.

Wire Mesh Welding

The Cold Rolled wire conforming to BS 4482 is used for the production of Welded wire mesh. The Wire Mesh plant is equipped with machines with high level of technological sophistication from EVG, Austria.

Machines are fully automatic and are capable of producing welded wire mesh in various sizes and types at a speed as high as 6 sheets per minute. It has a production capacity of over 100 Tons per day with minimal human intervention.

The Wire Mesh production conforms to BS 4483 standard for steel fabric for reinforcement of concrete. Samples are taken from each batch to ensure quality of welding.





Al-A'Ali Reinforcement Welded Pile Cage

Welded Pile Cage

Al-A'Ali Reinforcement strives towards achieving customer satisfaction and this is further reinforced by the facilitation of two fully automatic Pile Cage-welding machines from STEMA PEDAX, Germany, and SCHNELL, Italy.

The materials used for welded pile cages are deformed steel bars (Hot Rolled) for reinforcement of concrete complying with BS 4449 Grade 500B or ASTM A615 Grade 60 standards. Spirals are made from hot rolled rebar coils. Concrete spacers are attached to a circular ring and welded to the bottom of the Pile Cage to maintain the specified cover at the bottom of the cage.

SI	DESCRIPTION	SIZE
1	Cage Length (Metre)	Customized
2	Minimum Cage Diameter (mm)	200
3	Maximum Cage Diameter	1500
4	Spiral Feeding Pace (mm/m)	50–500
5	Minimum Spiral Diameter (mm)	8
6	Maximum Spiral Diameter (mm)	20
7	Minimum Rod Diameter (mm)	12
8	Maximum Rod Diameter (mm)	40



Threaded Bar and Couplers

Al-A'Ali Reinforcement is equipped with a standard threading machine from Dextra Manufacturing, Thailand, which is capable of making threaded bars for mechanical splicing. The parallel threading process is realized through a three step manufacturing process namely Cutting, Cold Forging, and Threading.

Al-A'Ali Reinforcement is the authorized supplier of BARTEC Mechanical Couplers, used for connecting concrete rebars and is an alternative to lap splicing.

Manufacturing Process

Cutting

The end of the reinforcing bar is sawn square



Cold Forging

The sawn end of the reinforcing bar is then enlarged by a Patented cold forging process. The core diameter of the bar is increased to a predetermined diameter.



Threading

Finally, the enlarged end is cut (or rolled) to a standard ISO metric thread



Key Benefits

- Practical alternative to lap splicing
- Solves bar congestion problems
- Shortens construction cycle time
- Reduces steel wastage

Technical Specification

SL	BAR DIA (MM)	METRIC THREAD X PITCH	LENGTH	OD MAX
1	12	M14 X 2.0	28	21.0
2	14	M16 X 2.0	32	24.5
3	16	M20 X 2.5	40	30.5
4	18	M22 X 2.5	44	36.5
5	20	M24 X 3.0	48	34.3
6	22	M27 X 3.0	54	40.5
7	25	M30 X 3.5	60	42.5
8	28	M33 X 3.5	66	49.0
9	32	M36 X 4.0	72	53.0
10	36	M42 X 4.5	84	61.0
11	40	M45 X 4.5	90	68.0

Splicing Methods

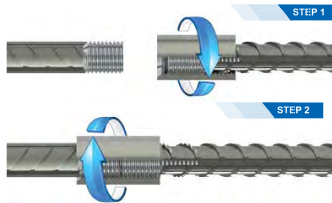
Type A

When the connecting bar can be rotated. Consisting of 1 standard thread, 1 coupler, 1 extended thread



Type B

When the connecting bar is too long or too heavy to turn. Consisting of 1 standard thread, 1 coupler, 1 extended thread



Type C

When the connecting bar cannot rotate. Consisting of 1 standard thread, 1 coupler, 1 extended thread, 1 lock-nut



- Provides continuity of reinforcing bars
- Enables multiple re-use of foam works
- Allows full ductile elongation of bars
- No staggering of bars required

Steel Fixing

Reliability, quality, and stability form the guidelines by which Al-A'Ali Reinforcement's work culture is based upon. With a highly skilled, dedicated, and loyal team of professionals, we are well positioned to provide quality steel fixing services for your next project. Al-A'Ali Reinforcement Steel fixing personal have extensive experience and are able to work with our clients to plan ahead ensuring project target dates are achieved.



Al-A'Ali Reinforcement Services

Quality Control and Assurance

At Al-A'Ali Reinforcement, we are totally committed to achieving and maintaining the highest standards of quality in every area of operation from receiving the order to the delivery and fixing on-site. With this vision we have our own in-house Quality Plan and certified with ISO 9001:2015 by TUV CERT Certification body for Quality Management System of RWTUV Systems GmbH (Germany). We have Six-Step approach towards achieving our quality plan.



1. This commitment to quality begins with the raw materials, which we source out from different manufacturers with international certification assuring quality.
2. Every batch is received with relevant mill certificates and third party inspection certificates if available.
3. A dedicated quality control department in operation will ensure the quality in terms of visual appearance and sampling is done to further test the mechanical and chemical properties in compliance with BS 4449 standard for carbon steel bars for the reinforcement of concrete.
4. In process inspection of materials in production is done to ensure quality in terms of dimensions and shapes as per the approved bar bending schedule and to meet zero tolerance on errors as per the specified standards for production.
5. Systematic and on time deliveries with double checks to eliminate any possible non conformities.
6. On site inspection while fixing to maintain the standards and to meet the customer requirements.



In-House Testing Laboratory

To further ensure the quality of material we supply, in house tests of mechanical properties are conducted at regular intervals at our material testing laboratory. Our laboratory is equipped with the latest SATEC Series Static Hydraulic Universal Testing Machine from INSTRON, USA.



Warehousing

Al-A'Ali Reinforcement has a separate warehouse with an area of 4000 square meters capable of stocking 30,000 Tons of steel under cover and also has a dedicated 50 T capacity goliath crane that enables the transfer of materials from the warehouse to the production plant.



GPS

We have the GPS set-up for tracking timely deliveries to customers, and work effectiveness. We deliver and focus on our values of customer service.



Logistics and Delivery

Al-A'Ali Reinforcement with its own fleet of trucks and trailers has the capacity to deliver materials as per customer requirements round the clock. All the vehicles are fitted with cranes for easier and faster offloading at site and our drivers have 3rd party accredited offloading certification to ensure your delivery is offloaded safely.

All dispatches are well planned and programmed to suit every customer's needs. No matter how large or small any building project is, delivery on time is vitally important. Over 90% of our deliveries are made within 48 hours of the order being placed.



Al-A'Ali Reinforcement Reference Projects

A small selection of our projects.

For further information on completed or ongoing projects, please contact us directly.

ABG Tower – Bahrain Bay	Isa Town Interchange	PPP Housing project at Shamaliya
Abraj Al Lulu Tower (A-2)	JBF Polystyrene Factory - Hidd	PRAXAIR
Al Ezzel Power Station	KFH Tower at Amwaj	Reef Island - Apartments & Chalets
Al Sahel Resort - Zallaq	Khadija Plaza, Juffair	Riffa Views
ALBA Cast House - Bechtel	King Faisal Highway Detour Road	Royal Charity Organisation building
ALBA Line -5PDS	King Hamad General Hospital	Royal Hanger-Sakhir Airbase
Alba PotLine 6 - Bechtel / Gama	Lavista Tower - Juffair	Royal University for Women
ALBA Power Station 4 - Alstom	Line 5 Rectiformer @ Alba	Seef Terrace - Seef
Bahrain City Centre - Pilecage Supply	LSDP-BAPCO	Shaikh Khalifa Bin Salman Highway
Bahrain Financial Harbor-Infrastructure	Lulu Island Development	Shaikh Khalifa Bin Salman Port
Bahrain World Trade Center-City Gardens	Marassi Shores	Sitra Bridge - Pilecage Supply
Banyan Tree Resort & Spa (Al-Areen)	Marina West Apartments	Sitra Shopping Mall - Sitra
BAPCO LBOP	Marriott Executive Apartments	Smart Structure GF & Pumping Station
Capricon Tower - Juffair	Mina Salman Interchange	Stainless Steel Plant
Customs & Administrative Building – Shaikh Khalifa Port	MOH - Multi Storey building at Juffair	STP Project - Seef
Dar Building	MOH- Residential Complex - Um Al Hassam	Substations - Al Buhair - Al Hunainiya - Salmanya
Diplomat Apartments	MOWH- Bldg @ Hooraa	SULB DR @ Hidd - Piling Works
Dominos Hotel – Al Areen	New Indian Embassy Building - Seef	Treasure Tower - Dilmunia
Era Views Tower - Hooraa	Oasis Mall - Juffair	Villamar Tower - Bahrain Bay
Girls Intermediate School at Busaiteen	One & Only Bahrain resort - Seef	700 Villas at Diyar Al Muharraaq
Hidd Pumping Station Phase III	Petal One Villas-Durraat Al Bahrain	504 Villas at East Hidd



Al-A'Ali Reinforcement Certification



TÜV NORD

Management System EN ISO 9001:2015
Fabrication and Supply Straight, cut & bend bars, pile cages, welded wire mesh and threaded coupler bars for concrete reinforcement



Ministry of Works

Material Compliance Report MCR 2790/2017
Deformed Reinforcing Steel Bars Grade B500B Sizes: 8mm, 10mm, 12mm, 16mm, 20mm, 25mm, 32mm



Ministry of Works

Material Compliance Report MCR 2791/2017
Welded Mesh Reinforcement Sizes: A80 (4.5mmØ), A142 (6mmØ), A252 (8mmØ), A393 (10mmØ)

Ahmed Mansoor Al A'ali Co. BSC®
Al-Aali Reinforcement Co. W.L.L
P. O. Box: 80124, Building 13 ,Gate 1347,
Road 5225,Ras Zuwyed 952,
Kingdom of Bahrain.

Tel: 00973-17830777
Fax: 00973-17830802
amasteel@al-aali.com

www.amabuildingmaterials.com



AMA Scaffolding and Steel Formwork



Quality Policy Statement

We at Ahmed Mansoor Al-A'ali Co BSC Scaffolding & Steel Formwork Division are fully committed to the Manufacturing & Supplying of High Quality Scaffolding and Steel Formwork to the complete satisfaction of each and every customer.

We commit ourselves to achieve this by:

Achieving production commitments on time, within the budget as well as satisfying customer requirements consistently and cost effectively.

Promoting Quality Management System awareness and understanding throughout the organization.

Continually improving our processes, products and services in a sustainable manner as well as utilizing the best available manufacturing technologies.

Adhering and complying with the discipline and standards with respect to the BAHRAIN Ministerial regulations in a socially responsible manner.

Communicating the policy to employees and other interested parties with emphasis on their individual QMS obligations.

Aiming to enhance customer satisfaction by providing value added products and services.

AMA Scaffolding About us

AMA Scaffolding is a leading Scaffolding & Steel Formwork manufacturer with the largest production facility located in the Kingdom of Bahrain providing competitive pricing and fast delivery across the Middle East market.

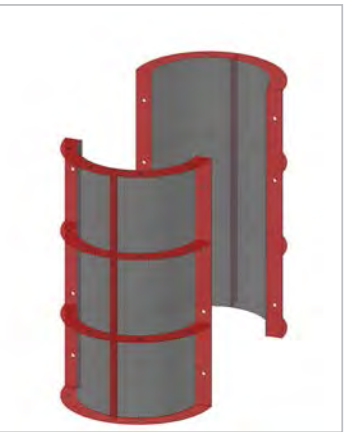
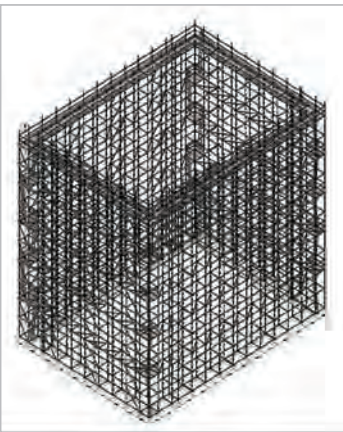
As part of the Ahmed Mansoor Al A'Ali Group, AMA Scaffolding is the preferred manufacturer of quality Scaffolding & Steel Formwork products and services in the Kingdom of Bahrain.

Our state of the art Scaffolding & Steel Formwork manufacturing facility is equipped with all the latest machines and tools to compliment the experienced engineering expertise within the AMA Scaffolding team. We are an ISO 9001:2015 certified company that maintains strict quality standards and follows control practices to the International standards and codes.

All of our scaffolding products are manufactured to the specification of BS 1139/ EN 10219. Our existing production capacity of 1200 tons per month has an abundant scope for expansion should the necessity arise.

AMA Scaffolding and Steel Formwork

Our Products & Services



ERECTION

AMA Scaffolding & Steel Formwork team has fully skilled professionals who understand that the way to get the most out of a chosen scaffold system is to assemble and dismantle it correctly. Therefore, we have selected experienced scaffolders to erect our products in the required form. Our priority is not only to achieve the expected high levels of performance but to also go above and beyond to provide the most crucial factor, which is safety.

RENTING

AMA Scaffolding & Steel Formwork has flexible rental services to meet all client requirements. Going beyond standard renting and transportation services, we utilize our production facilities to keep our rental stock in good condition and at the highest quality by conducting regular inspections and refurbishment. To not compromise on the safety of rental equipment, we perform diligent checks and maintenance on all items returning to our premises after their use.

PRODUCTION

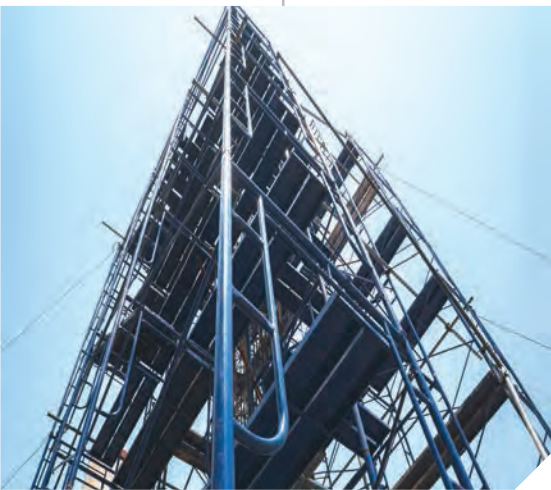
AMA Scaffolding & Steel Formwork understands the benefits of well-designed products manufactured from quality materials under the guidance of an accredited manufacturing process. We have implemented and strictly adhere to our accredited BS 1139 and BS 10219 quality processes. From the time we procure our raw materials, we keep track of the entire manufacturing process through to the delivery of the finished product.

TRADING

AMA Scaffolding & Steel Formwork has established a network for trading, marketing, and procurement of the various components and different systems. As a pioneer in the supply of scaffolding products & accessories, our customers benefit not only from our capacity & capability to supply in massive quantities, but also from the reliability and quality of the products and accessories.

DESIGN

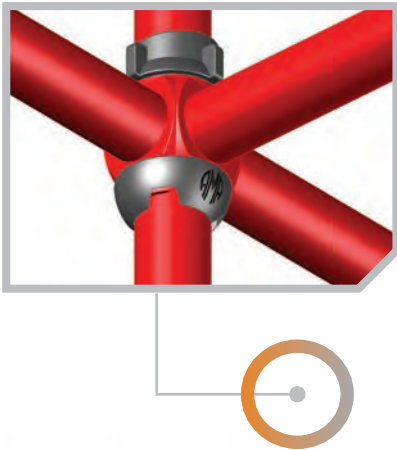
AMA Scaffolding & Steel Formwork has its own design department that follows international standards (BS 5975, TG20 & AISC) and other applicable standards as required to provide an unrivalled design service through our proactive attitude and approach. Our aim is to satisfy the client's needs by understanding their project requirements and applying our design and technical expertise accordingly. We believe that by exceeding our clients expectations and contributing to their ongoing success we can enjoy a mutually beneficial business relationship.



AMA Scaffolding and Steel Formwork

AMA Cuplock System

AMA Cuplock System provides sturdy, timesaving, versatile, and easily assembled scaffolding with universal usage. Thanks to the unique connection between two main components created by cups and blades, the system is truly multidirectional. From simple flexible access scaffolding to the comprehensive load bearing shoring structures AMA Cuplock can be employed in various ways. Combined with auxiliary components, the system can easily be transformed into a staircase tower, cantilevers or suspended platforms.



CORE FEATURES

- Special connection nodes make the system versatile. Particularly in circular scaffolding, this system can't be matched.
- Securing the connection of all components by a single action makes this system outstandingly fast to erect & dismantle.
- No wedges, bolts, or nuts are used to fasten which are typically critical units prone to loss or damage.
- The contact area of the cuplock joint, especially its length makes the system extremely solid while individual components are light weight.

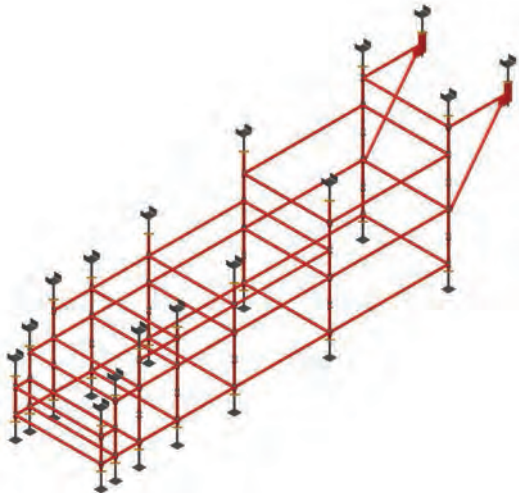
MAIN ITEMS

ITEM	STANDARD RANGE (M)										
Standard	0.5	0.8	1.0	1.3	1.5	1.8	2.0	2.3	2.5	2.8	3.0
Ledger	0.6	0.8	0.9	1.0	1.2	1.3	1.5	1.6	1.8	2.0	2.5
Intermediate Transom	0.6	0.8	0.9	1.0	1.2	1.3	1.5	1.6	1.8	2.0	2.5

All items are available in thickness 3.0 and 3.2mm. As per requirement sizes (thickness) might be customized accordingly.

COMPONENTS AND ACCESSORIES

ITEM	DISCRIPTION
Spigot Connector	30 x 30 x 3mm L-0.245m
Base Plate	150 x 150 for diameter 48mm
Socket Base	150 x 150 for diameter 38mm - Universal Jack
Socket Forkhead	150 x 170 for diameter 38mm - Universal Jack
Universal Jack	Threaded tube 38mm L-0.760m (0.650m)
Adjustable Base	Plate 150 x 150 / threaded tube 38mm L-0.760m
Adjustable Head 100x170	Plate 100 x 170 / threaded tube 38mm L-0.760m
Adjustable Head 200x200	Plate 200 x 200 / threaded tube 38mm L-0.760m
Adjustable Head 100x186	Plate 100 x 186 / threaded tube 38mm L-0.760m
Cantilever Frame 1.0m	Cantilever 1.0m available for 1.5 (1.0)m lift
Cantilever Frame 1.5m	Cantilever 1.5m available for 1.5 (1.0)m lift



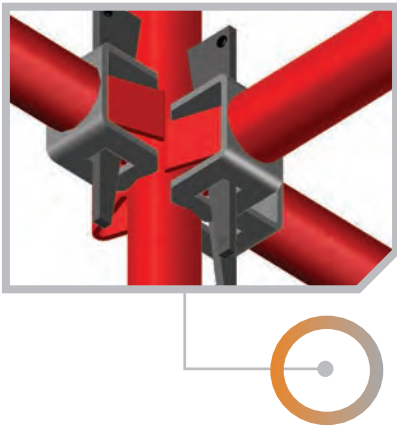
Unless requested, material is painted in standard AMA Scaffolding color (custom color is available on request)

ALL MATERIAL SPECIFICATION EN10219 & BS1139

AMA Scaffolding and Steel Formwork

AMA Kwick-Stage System

Although often used as a support system, the Kwick-stage also serves as access scaffolding. A high load capacity, easy erection, along with sophisticated connection designate this system to be ideal for shoring of horizontal formwork support concrete or prefabricated construction. With the introduction of the Kwick-Stage Support & Decking system, a level and uniform support grid of decking beams and infills enables speedy and economical construction progress. The system has most components built into the standards, ledgers, dropheads, and beams thereby ensuring fewer loose components.



CORE FEATURES

- The "V" pressed nod predefines direction for horizontal and diagonal use, thus making it easy to erect on required structure even for semiskilled scaffolders.
- With the ability to fasten individual components on incorporated wedges, the structure is very rigid while erecting and dismantling
- Bracing by diagonals which are part of the system makes it easy to achieve dependable vertical alignment and minimize eccentricity in connections thus a high load capacity is reached.

MAIN ITEMS

ITEM	STANDARD RANGE (M)				
Standard	1.0	1.5	2.0	2.5	3.0
Ledger	0.6	0.9	1.2	1.8	2.4
Intermediate Transom	6.0	9.0	1.2	1.8	2.4
ITEM	STANDARD RANGE (INCH)				
Standard	3'.3"	4'10.1/2"	6'.6"	8'11.1/2"	9'.9"
Ledger	2'	3'	4'	6'	8'
Intermediate Transom	2'	3'	4'	6'	8'

All items are available in thickness of 3.0 and 3.2mm. As per requirement, sizes (thickness) may be customized accordingly.

COMPONENTS AND ACCESSORIES

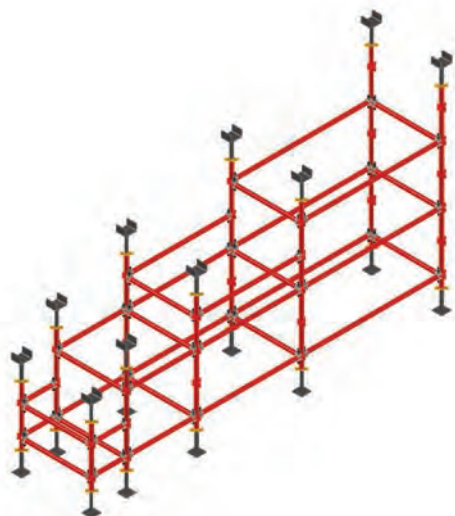
ITEM	DISCRIPTION
Spigot Connector	30 x 30 x 3mm L-0.245m
Base Plate	150 x 150 for diameter 48mm
Socket Base	150 x 150 for diameter 38mm - Universal Jack
Socket Forkhead	150 x 170 for diameter 38mm - Universal Jack
Adjustable Base	Plate 150 x 150 / threaded tube 38mm L-0.760m
Adjustable Spigot Jack	Adjustable connection of Drop Head
Kwick Stage Drop Head	Drop Head for Kwick Stage beams
Cantilever Frame	Cantilever 1.2m available for 1.5 (1.0)m lift
Cantilever Beam Frame	Cantilever 1.2m available for 1.5 (1.0)m lift
Beam Bracket	available for 1.5 (1.0)m lift

Unless requested, material is painted in standard AMA Scaffolding color (custom color is available on request)

ALL MATERIAL SPECIFICATION EN10219 & BS1139

DECKING

ITEM	BEAM RANGE (INCH)		
Kwick Stage Decking Beam	4"	6"	8"
Kwick Stage Infill Beam	2"	3"	4"



AMA Scaffolding and Steel Formwork

AMA Frame Access Scaffolding

This system is based on quick assembling with a minimal number of items required. Only frames and braces are needed to build a fully usable access scaffolding suitable for a broad variety of work, especially in relation to facades. Whether completed by wooden boards or a steel platform, access frame scaffolding is an economically efficient system which saves on both time and cost.



CORE FEATURES

- The mechanical design of this system results in low weight frames benefited from the stiffening of posts.
- Frames have standardized sizes and when combined they provide more functions. With no additional tools required, the system is outstandingly swift to erect and dismantle.
- The posts of the frames have a standard diameter based on common couplers. Tubes and fittings can be used whenever bracing, reinforcement, handrails or other structures needed to complete the requirements.

KOREAN FRAME

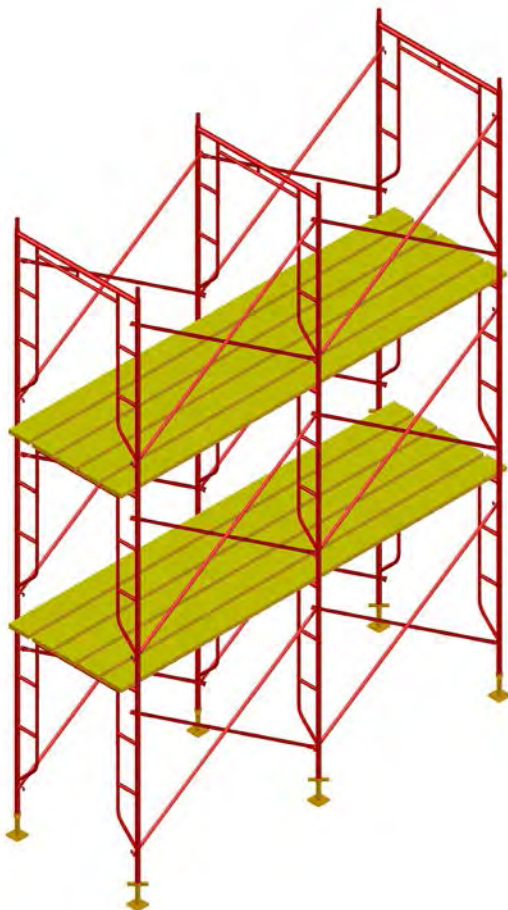
ITEM	HEIGHT	WIDTH	POST TUBE	SPIGOT
	(M)	(M)	(MM)	
Korean Frame 1.0	1.7	1.0	42.4	Y/N
Korean Frame 1.2	1.7	1.2	42.4	Y/N

ITEM	DESCRIPTION
Cross Brace	For a bay of 1.82 m
Spigot	Connector for Spigotless Korean Frame
K/F Adjustable Base	Plate 150 x 150 / threaded tube 33.7mm L-0.450m

HALF LADDER FRAME

ITEM	HEIGHT	WIDHT	POST TUBE	SPIGOT
	(M)	(M)	(MM)	
Half Ladder Frame	2.0	1.0	48.3	Y/N

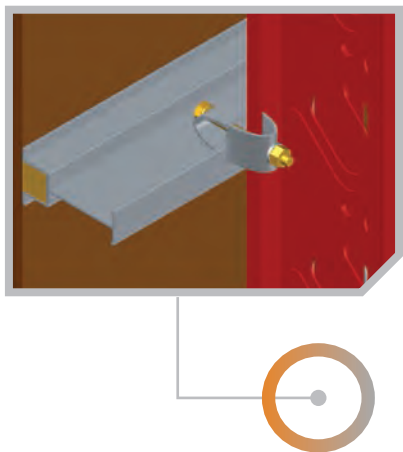
ITEM	DESCRIPTION
Singel Brace	For a bay of 2.50 m
Cross Brace	For a bay of 2.50 m
Spigot	Connector for Spigotless Half Ladder Frame
Adjustable Base	Plate 150 x 150 / threaded tube 38mm L-0.760m



AMA Scaffolding and Steel Formwork

AMA Soldier System

A robust, versatile, and easily assembled formwork that offers a wide range of high performing applications due to the various possible configurations. Usage of the Soldier system is not limited to vertical concrete construction. Vertical or horizontal projects like bridges and heavy concrete decking can be also be executed by this system. By adding only a few more items, the system is then able to be employed for heavy duty shoring structures with all the features of superior a product.



CORE FEATURES

- Since the distance in between all components is customizable, formwork can be plotted according to the required pressure even when the expected resistance is very high.
- The ability to optimize items for specific pressure makes this system a wise economical choice.
- Wallers can be combined into the desired length by using incorporated end plates.
- Diamond shaped openings in wallers provide options to fix accessories to the complete system and make it lighter and handy.
- The system can be composed with a choice of secondary wooden or aluminium beams to create the final shape of the concrete using an optional board.

MAIN ITEMS

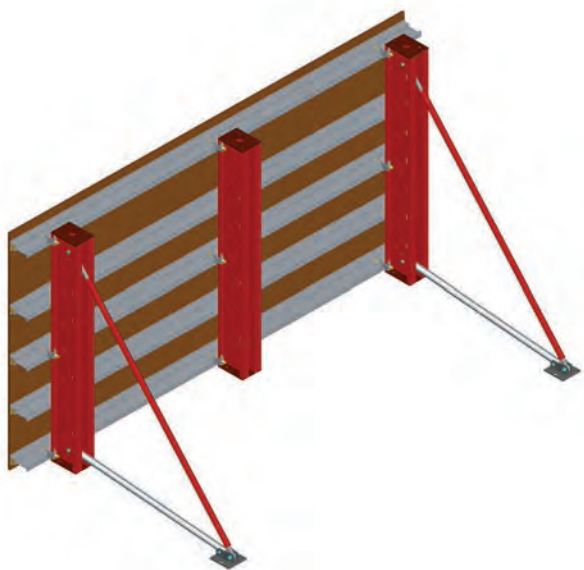
ITEM	STANDARD RANGE (M)							
	0.45	0.675	0.9	1.125	1.8	2.7	3.15	3.6
Solder								

All items are available in thickness of 3.0 and 3.2mm. As per requirement, sizes (thickness) may be customized accordingly.

COMPONENTS AND ACCESSORIES

WALL ACCESORIES	SHORING ACCESORIES
Timber Waling Clamp	Forkhead
Wedge Clamp	Head/Base Plate
Universal Clamp	Swivel Shoring Plate
Lifting Bracket	Tubulat Shoring Adaptor
Support Plate	Soldier Bracing Coupler
End Tie Washer	Threaded Shoring Adaptor
Form Jack	Heavy Duty Push-Pull Adaptor

For stabilization of Soldier Formwork either Soldier Shoring System might be used or Push-Pull Props in the same.



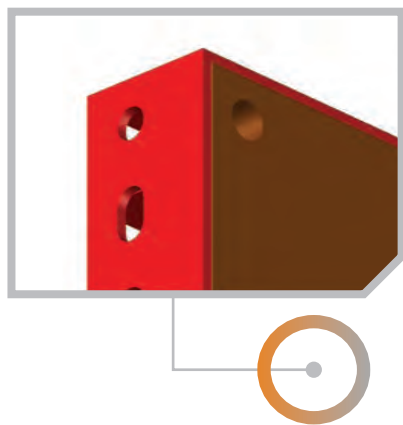
Unless requested, material is painted in standard AMA Scaffolding color (custom color is available on request)
ALL MATERIAL SPECIFICATION EN10219 & BS1139

Unless requested, material is painted in standard AMA Scaffolding color (custom color is available on request)
ALL MATERIAL SPECIFICATION EN10219 & BS1139

AMA Scaffolding and Steel Formwork

AMA Combi Formwork

The combi formwork is a handy practical modular formwork for concrete vertical construction like foundations, pillars, walls, and shafts. With a wide range of dimensions, the combi formwork ensures concrete is laid into its required shape with superb on-site performance. The panels can be filled by various accessories that give a comprehensive solution for individual projects.



CORE FEATURES

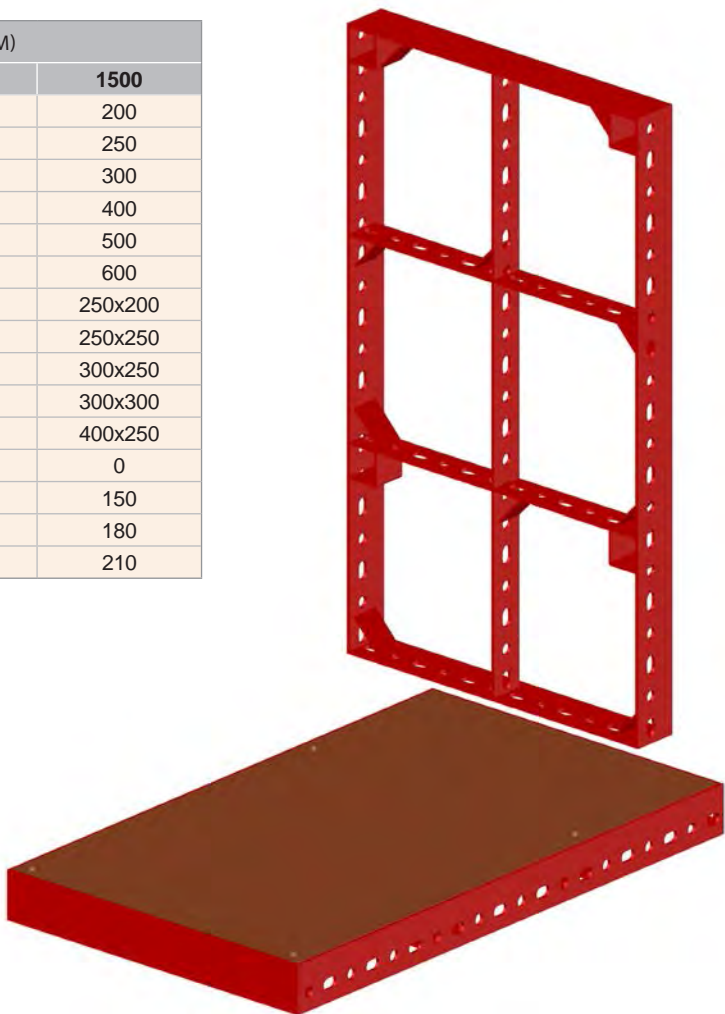
- Panels have sides with punched and drilled 5 cm interchangeable holes and slots for clips for simple fastening using connectors which ensure the panels are tightly joined. In the case of irregular terrain conditions, inclusion of the raster is very useful.
- Handset panel formwork is perfect for projects where lifting cranes are not viable, even if high resistance formwork is still required.
- Up to 40kN/m2 can be used with no additional reinforcement by wallers.
- Facing plywood is imbedded into steel frames, thus no extra investment is required. Plywood may be replaced once worn from usage.

COMBI FORMWORK

DIMENSIONS	H W	HEIGHT (MM)		
		1000	1200	1500
Panel	WIDTH (MM)	200	200	200
		250	250	250
		300	300	300
		400	400	400
		500	500	500
		600	600	600
Inner Corner		250x200	250x200	250x200
		250x250	250x250	250x250
		300x250	300x250	300x250
		300x300	300x300	300x300
		400x250	400x250	400x250
Outer Corner		0	0	0
Filler Plate		150	150	150
		180	180	180
	210	210	210	

FORMWORK ACCESSORIES

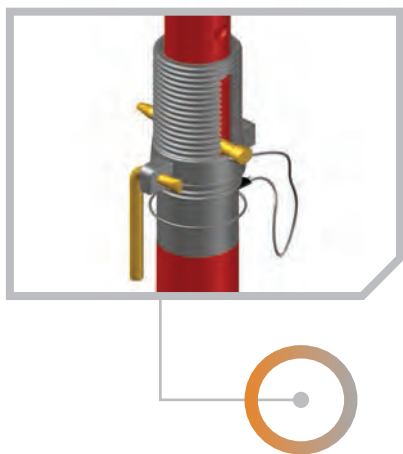
Crane Hook
Waller
Spanner Bold
Walk Bracket
Pin & Lock
"R" Safety Pin



AMA Scaffolding and Steel Formwork

AMA Props and Jacks

Props and Jack as are adjustable, coming with flexibility that goes hand-in hand with multi-utilization. Props come in a range of lengths along with two options for load capacity that allow them to be used for practically any horizontal structure up to 6 meters. Jacks are used for the stabilization of vertical formworks by absorbing horizontal loads from the wind. Jacks of different sizes are available to match the height of various walls to maintain an angle that ensures proper load transmission.



CORE FEATURES

- When using props, the entire height of shoring is supported by a single component of appropriate length. The erection of such systems allows for workers to complete their job in less time.
- Deployment of props isn't limited to a specific distance as this depends on load distribution.
- Props are designed in a manner that allows for them to be used with different types of heads for various types of horizontal formwork.
- Jacks have an incorporated foot that guarantees the transmission of the load into the ground without compromising stability.

MEDIUM DUTY PROPS

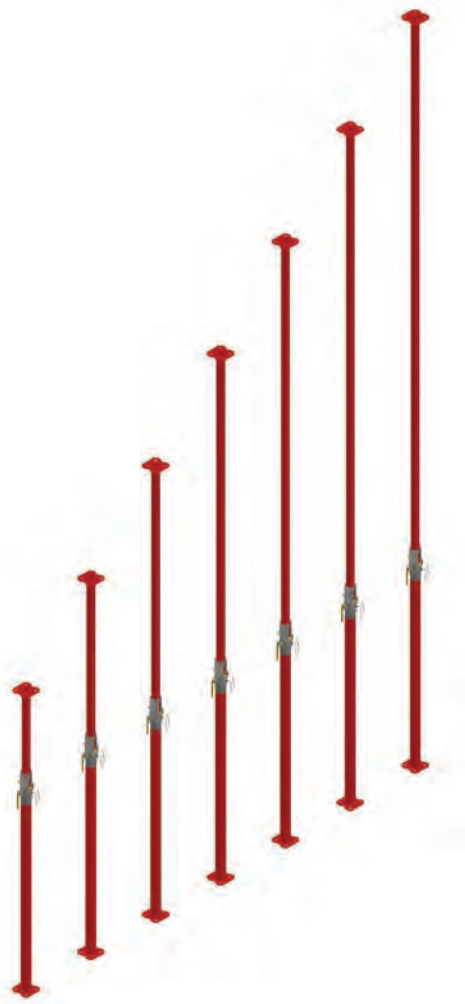
ITEM	EXTENSION (M)		WEIGHT
	MIN.	MAX.	KG
MD Props 1.5	0.95	1.50	6.00
MD Props 2	1.00	2.00	7.20
MD Props 2.5	1.50	2.50	8.20
MD Props 3	2.00	3.00	9.60
MD Props 4	2.50	4.00	11.60
MD Props 4.5	3.00	4.50	12.60
MD Props 5	3.50	5.00	13.60

HEAVY DUTY PROPS

ITEM	EXTENSION (M)		WEIGHT
	MIN.	MAX.	KG
HD Props 1.5	0.95	1.50	7.40
HD Props 2	1.00	2.00	10.30
HD Props 3	1.75	3.00	13.17
HD Props 4	2.50	4.00	18.08
HD Props 5	3.00	5.00	20.22
HD Props 6	3.50	6.00	26.50

HEAVY DUTY PUSH-PULL PROPS

ITEM	EXTENSION (M)		WEIGHT
	MIN.	MAX.	KG
HD Push-Pull Props 2	1.00	2.00	13.00
HD Push-Pull Props 3.5	2.00	3.50	17.84
HD Push-Pull Props 4	2.50	4.00	18.62
HD Push-Pull Props 4.5	2.50	4.50	21.42
HD Push-Pull Props 5	3.00	5.00	25.00
HD Push-Pull Props 5.5	3.00	5.50	26.80
HD Push-Pull Props 6	3.50	6.00	27.70



Unless requested, material is painted in standard AMA Scaffolding color (custom color is available on request)
ALL MATERIAL SPECIFICATION EN10219 & BS1139

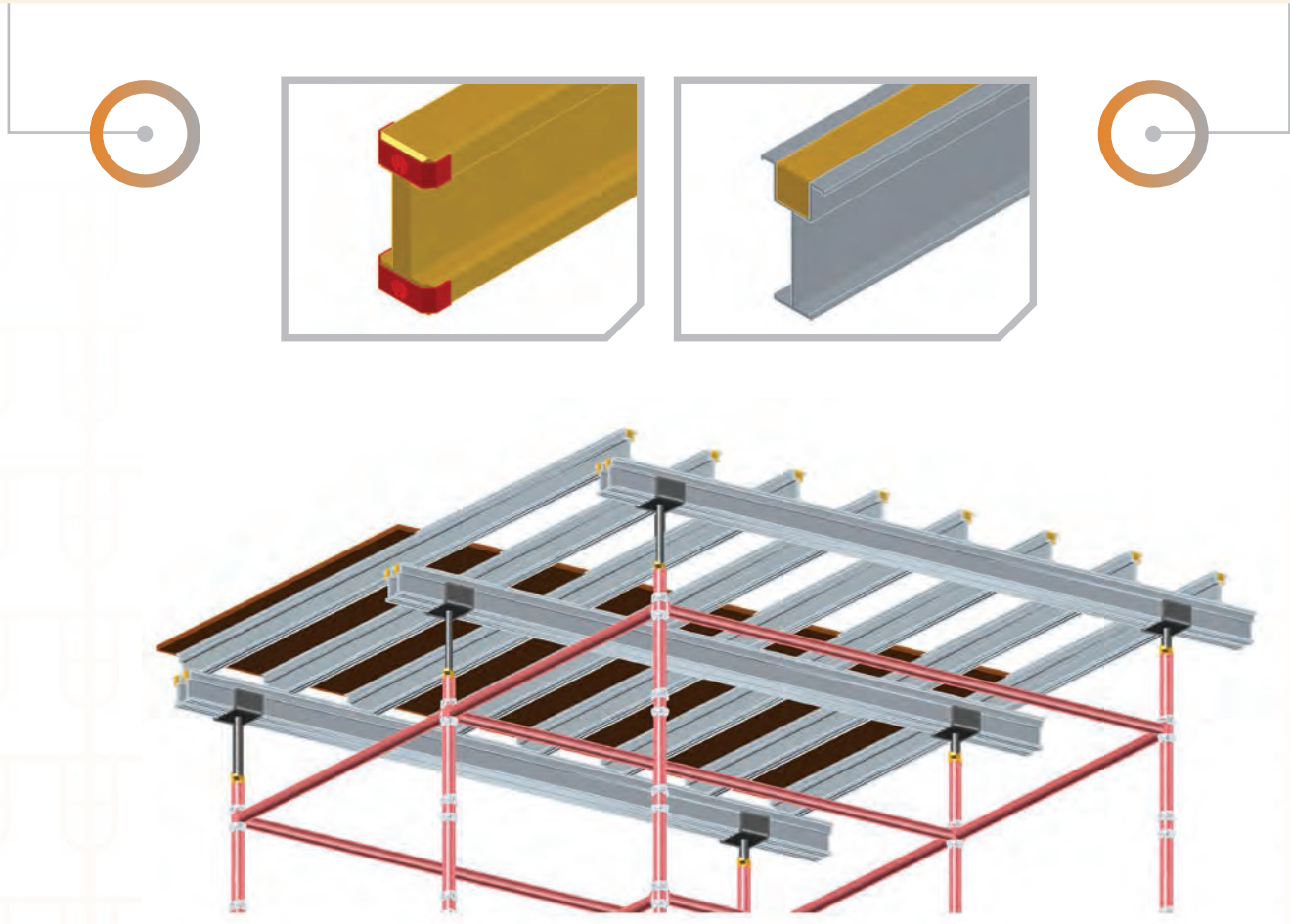
AMA Scaffolding and Steel Formwork

AMA-Aluminum & Timber Beams

AMA beams may be used as a part of formwork with both aluminium and wooden beams being compatible with the soldier system for vertical or horizontal construction. Additionally, beams are often used for slab formwork where they can either form part of the secondary or primary grid, or both. The handy shape and light weight of these components has a positive impact on the speed of assembling, dismantling, and shifting thereby allowing for less and better utilization of labour.

CORE FEATURES

- Traditional beam slab formwork is well known for its unlimited flexibility. In fact, its compatibility with all types of scaffolding and props make it outstandingly unique
- The sturdy properties and possibility to adapt the distance between the units makes formwork using beams a favoured choice as they can withstand even the highest expectations for pressure or load.
- While wooden beams are preferred because of their adaptable qualities and ease of maintenance on jobsites, aluminium beams are also highly commended for their high performance and durability.



STANDARD RANGE

ITEM	HEIGHT	SHEAR FORCE	BENDING MOMENT	WEIGHT	LENGTH
	MM	kN	kN/M	KG/M	M
Timber Beam H-20	200	11	5	4.50	up to 5.9
Aluminium Beam S-150	150	22	6.8	3.90	up to 7.2

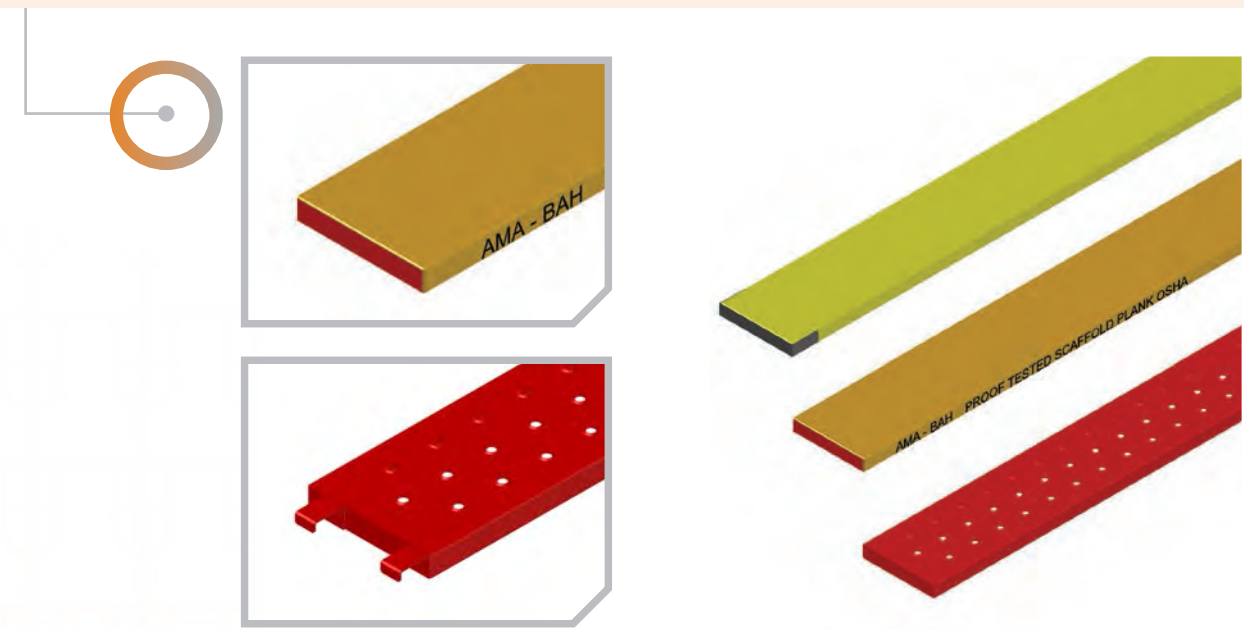
AMA Scaffolding and Steel Formwork

AMA-Steel and Wooden Boards

Access scaffolding requires suitable platforms. Wooden boards make the perfect solution for a safe, lightweight scaffold boards. Scaffolding steel boards can be used in place of wooden boards as a temporary access platform. In fact, they boast a high load carrying capacity and triple the life span of wooden boards.

CORE FEATURES

- Solid saw wooden boards are typically tensile and lightweight with their ends protected against splits with steel strips.
- Laminated Veneer Lumber (LVL) scaffold boards are a type of engineering wood that are produced to avoid defects that might be naturally found in solid saw boards. These boards are very stable and durable.
- Steel boards come incorporated with a slip resistant surface and due to their ingenious shape, they have heavy duty characteristics while possessing lightweight bodies. Clients can expect a guaranteed longer product lifetime.



WOODEN BOARDS

ITEM	HEIGHT	WIDTH	LENGTH*	WEIGHT	STANDARD
	MM	MM	M	KG/M	
Wooden Board	38	225	up to 3.9	4.9	BS 2482
LVL Board	38	225	up to 3.9	5.1	OSHA

STEEL BOARDS

ITEM	HEIGHT	WIDTH	LENGTH*	WEIGHT	STANDARD
	MM	MM	M	KG/M	
Steel Board Block End	38	225	up to 4.0	7.8	BS EN12811-1
Steel Board Hook End	38	225	up to 4.0	7.8	BS EN12811-1

AMA Scaffolding and Steel Formwork

AMA-Ladders, Staircase and Towers

It is essential to ensure the safe vertical movement of workers by using the appropriate equipment. Ladders with a suitable height need to be employed to maintain the correct slope and overlap over the platforms. Where the shifting of material is expected during the project execution, the staircase is used in place of ladders.



CORE FEATURES

- Ladders are produced with different lengths and properties to meet each project requirement. Ladder beams have a similar configuration and are supplied for overpassing longer horizontal spans or creating cantilevers.
- The use of the staircase is very effective when a large amount of people is passing through the vertical communication channel or material is due to be shifted.
- Aluminium towers are lightweight, easy to erect scaffolding structures. Despite a small base, and thanks to a stabilization system, they can reach an impressive height.
- Aluminium towers might be used as static units, whereas movable aluminium towers that are equipped with wheels can be used to reach different locations within a large area.

LADDERS

ITEM	POST	RUNG	WIDTH	LENGTH				
	MM	MM	MM	M				
Access Ladder	50x25 - 2mm	26.7 - 2mm	350mm	2	3	4	5	6
Steel Ladder	48.3 - 3mm(4mm)	48.3 - 3mm(4mm)	450mm	2	3	4	5	6
Ladder Beam	48.3 - 3mm(4mm)	48.3 - 3mm(4mm)	354mm	2	3	4	5	6

STAIRCASE UNIT

ITEM	HEIGHT	WIDTH	LENGTH	STANDARD
	M	M	M	
Stair Case Unit	2.0	0.8	2.5	EN 10219
Stair Case Unit	2.0	1.1	1.8	EN 10219
Stair Case Unit	2.0	1.1	2.5	EN 10219

ALU STAIR CASE TOWER

Dimension	Standards configuration 1.35(1.45) x 2.5m
Height	Up to 16m Height



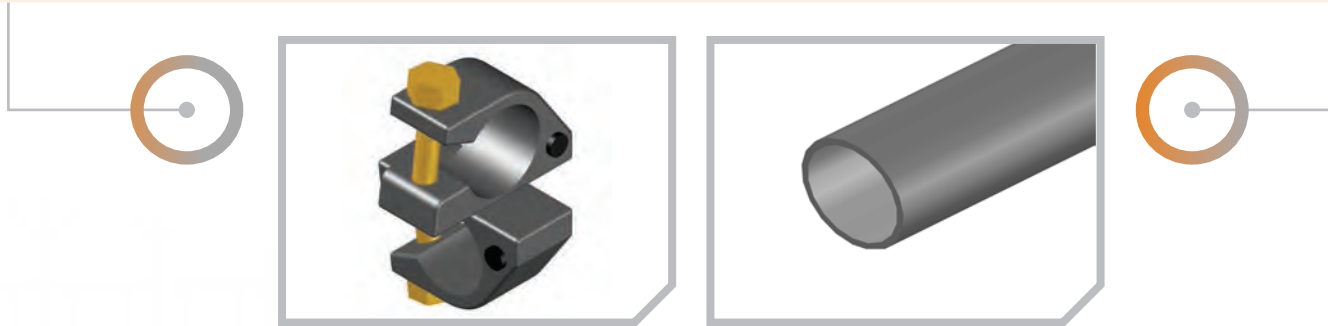
AMA Scaffolding and Steel Formwork

AMA-Tubes and Fittings

Tubes and fittings are items that have an overwhelming ability to be employed as complementary units to almost all types of scaffolding. While incorporating them into the other systems, components are used for the bracing and reinforcement of structures, while also being easily combined to the loadbearing formwork as individual systems. Additionally, couplers play an essential role in safety. They are designed to fasten boards and ladders, securing the connection of tubes or attaching them to the beams.

CORE FEATURES

- Universal components are compatible with almost all scaffolding systems.
- Used to reinforce, brace, and make a whole structure rigid. By using tubes and couplers to tie or outrigger, stability is secured.
- Creates an autonomous scaffolding system with impassable versatility thus it is often employed when a part or a whole project requires unconventional arrangement.
- Couplers give the opportunity to attach scaffolding to other steel structures – horizontal or vertical beams, girder flanges, and tubes.



FITTINGS

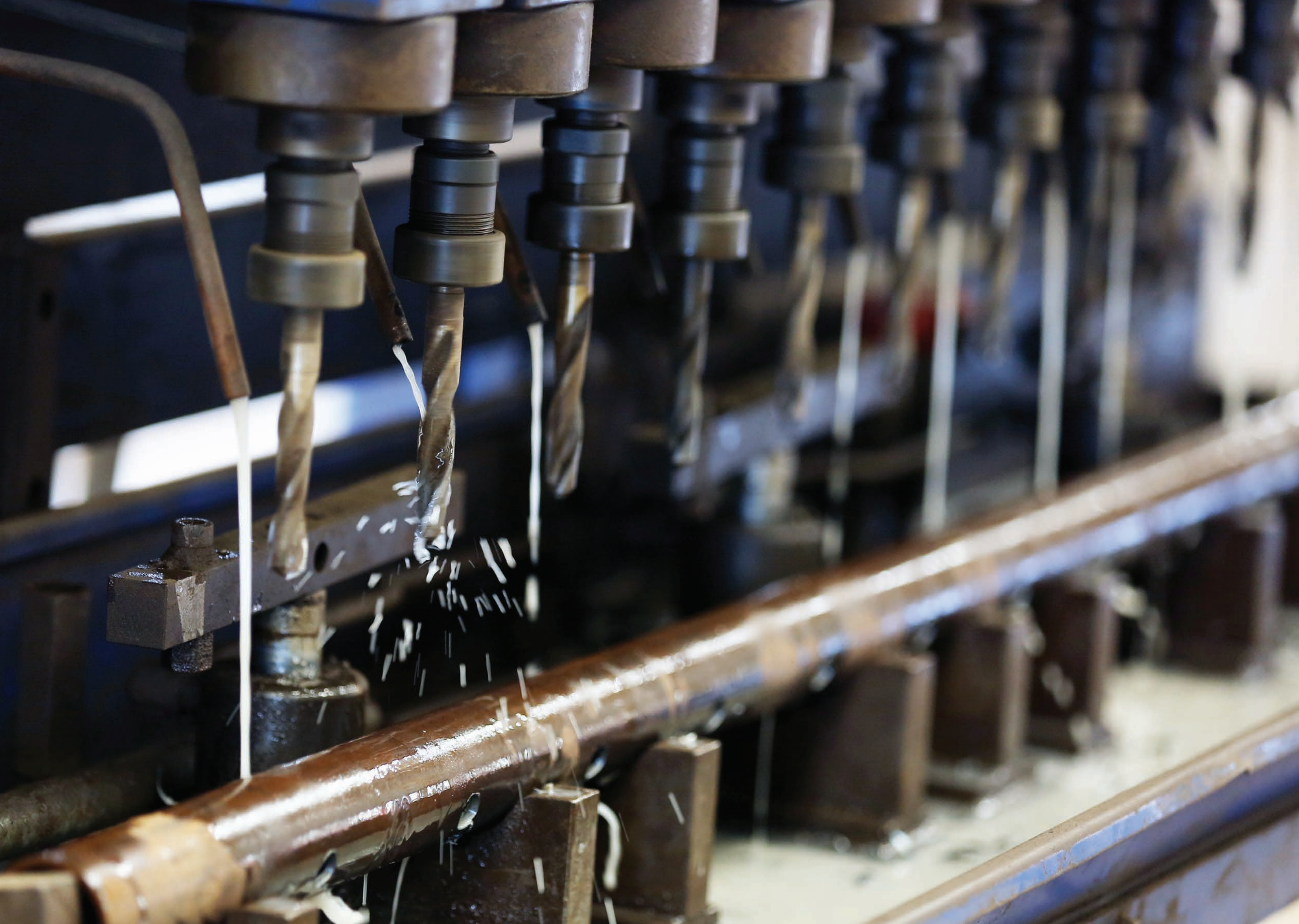
ITEM	TYPE	STANDARD
Double Coupler	Forged	BS 1139 EN-74 Class B
Swivel Couple	Forged	BS 1139 EN-74 Class A
Putlog Coupler	Forged	BS 1139
Girder Coupler	Forged	BS 1139
Board Retaining Clamp	Forged	BS 1139
Sleeve Coupler	Pressed	BS 1139
Ladder Coupler	Pressed	BS 1139
Inner Joint Coupler	Pressed	BS 1139

All Items: Diameter 48.3mm Zinc-plated/HDG

TUBES

ITEM	OUTSIDE DIAMETER	WALL THICKNESS	WEIGHT/BLACK	WEIGHT/GALVANIZED
	MM	MM	KG/M	KG/M
Tube	48.3	3.0	3.44	3.55
Tube	48.3	3.2	3.57	3.68
Tube	48.3	4.0	4.38	4.49

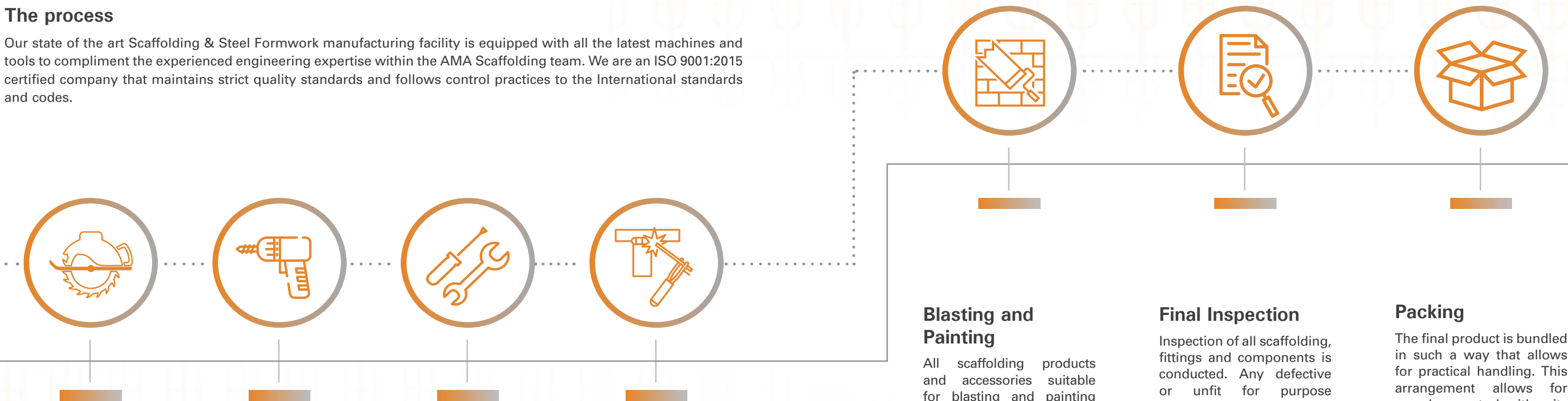
As per specification BS1139 / EN10219 - Embossed every 1.0m (upon request)



AMA Scaffolding and Steel Formwork Methodology

The process

Our state of the art Scaffolding & Steel Formwork manufacturing facility is equipped with all the latest machines and tools to compliment the experienced engineering expertise within the AMA Scaffolding team. We are an ISO 9001:2015 certified company that maintains strict quality standards and follows control practices to the International standards and codes.



Cutting

A Cold Saw Machine is used in the material cutting process. Material dimensions are checked as per the component drawing and visually checked for the product quality.



Punching/Drilling

The punching / drilling process is conducted by our Auto Tube Punching /Pillar Drilling Machine press punching/drilling the holes into the material. Material dimensions are checked as per the component drawing and visually checked for the product quality.



Assembly

Precise insertion of all elements into the jig table produces a final product that is accurate in shape, ensuring that the product is devoid of deviation due to shrinkage while welding.



Welding

Depending on the type of product, welding is executed either by using an automatic welding machine or by skilled welders. In both, welding is visually checked for the quality and grinded if required.



Blasting and Painting

All scaffolding products and accessories suitable for blasting and painting services are prepared and cleaned via our shot blasting machine to ensure sufficient debris is removed enabling thorough inspection and the visibility of any damage, defect or corrosion. Painting is completed by dipping and spray painting with quick drying enamel.



Final Inspection

Inspection of all scaffolding, fittings and components is conducted. Any defective or unfit for purpose components are separated and the processed through our scaffold repairs facility. All material is visually checked, and a QC passed stamped tag is placed on each bundle.



Packing

The final product is bundled in such a way that allows for practical handling. This arrangement allows for seamless control, with units identifiable through the delivery note. Additionally, products are fastened to ensure safe transportation and movement by using nylon strips that safeguard the product from scratches.



AMA Scaffolding and Steel Formwork Services

Logistics and Delivery

The Scaffolding and Steel Formwork Division has its own fleet of trucks and trailers that have the capacity to deliver materials as per customer requirements round the clock. Vehicles fitted with cranes for easier and faster offloading on-site are available. All dispatches are well planned and programmed to suit every customer's needs.



GPS

The Scaffolding and Steel Formwork Division have the GPS set-up for tracking timely deliveries to customers and work effectiveness. We deliver and focus on our values of customer service.



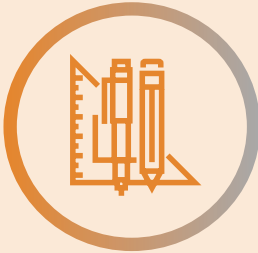
Quality Control / Assurance

At Scaffolding and Steel Formwork Division, we are totally committed to achieving and maintaining the highest standards of quality in every area of operation from receiving the order to the delivery and fixing on-site. With this vision we have our own in-house Quality Plan and certified with ISO 9001:2015 by TUV CERT Certification body for Quality Management System of TUV NORD GmbH (Germany). We have great investments towards consistently achieving our quality plan. This commitment to quality begins with the raw materials, which we source from different manufacturers with international certification assuring quality.



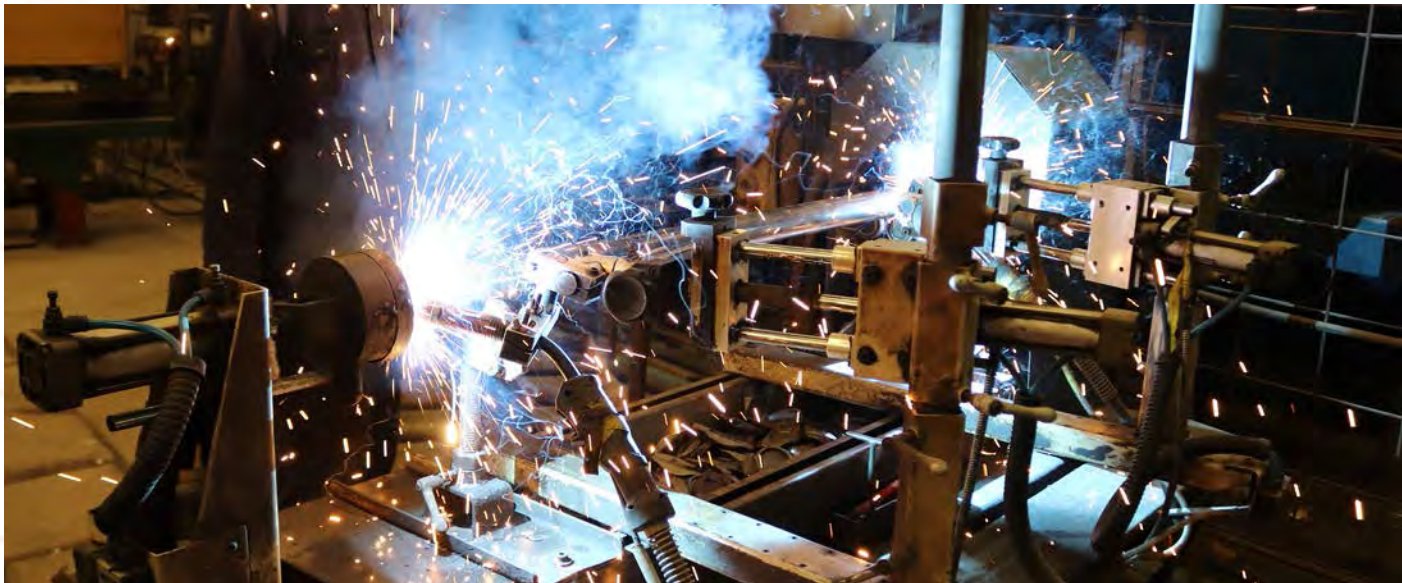
Consultancy

The Scaffolding and Steel Formwork Division's technical team is always keen to be involved from the early stages of projects and contribute by providing the best possible solution. Feedback shows us the best results come from when we participate from the design or tender stage. We are consistently improving our 'know-how' through everyday experience and by providing an individual commitment, to each and every project we take on, to fulfil our client's needs.



Supervising

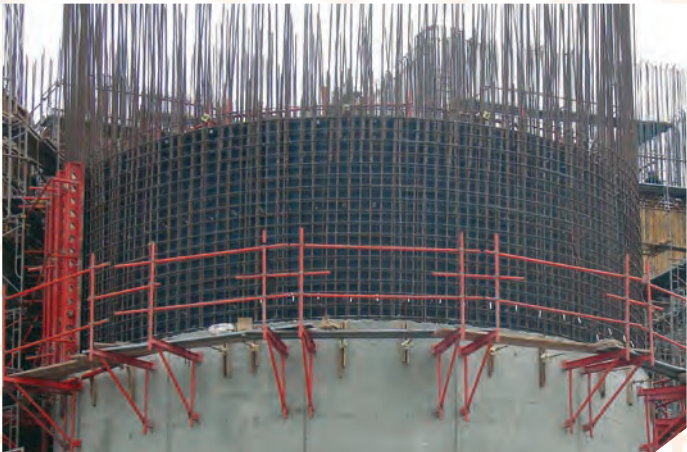
The Scaffolding and Steel Formwork Division recognises that the ambition and knowledge that is employed during the design stage is crucial. However, a responsible lead is required to oversee and advise on how best to execute the project. With various changes that may occur during the project cycle, with our experience we're able to determine if the rudimentary arrangement is still to be followed. Our technical team is capable to provide an assessment and assist with such matters in order to secure that the project is completed safely.



AMA Scaffolding and Steel Formwork Reference Projects

A small selection of our projects.
For further information on completed or ongoing projects, please contact us directly.

Bahrain Bay Four Seasons Bridge	Ministry of Works
Bahrain Bay North Foul Water Tank	PPP Shamaliya
Bahrain City Center	PPP Social Housing Project Island
Bahrain Hidport Pellet Silos	Sadara Project - Oil Quench Tower (Saudi Arabia)
Diyar Al Muharraq	National Guard Housing Project (Saudi Arabia)



AMA Scaffolding and Steel Formwork Certification



TÜV NORD

Management System
EN ISO 9001:2015

Manufacturing of Scaffolding and
Steel Formworks



AMA Scaffolding

Compliance Certificate
EN 10219/BS1139

Manufacturing of Scaffolding and
Steel Formworks

Ahmed Mansoor Al A'ali Co. BSC®
Scaffolding & Steel Formwork Division
P. O. Box: 80124, Building 13 ,Gate 1347
Road 5225,Ras Zuwyed 952,
Kingdom of Bahrain

Tel: 00973-17830777

Fax: 00973-17830802

amascaffolding@al-aali.com

www.amabuildingmaterials.com



Middle East Block Factory



Quality Policy Statement

Middle East Block Factory is dedicated to the continual improvement and maintaining high levels of customer satisfaction.

We are fully committed to consistently meeting our customer expectations and providing the highest quality of service in all our activities related to the supply of Concrete Blocks, Pavers, Kerbs, and Slabs.

Providing the most cost effective and efficient services, and constantly looking at ways and means of improving the quality of our products and services.

Establishing, measuring, and reviewing our Quality Management System as a continual improvement process.

Competent and professional staff who are provided with continuous training.

The above commitment shall be achieved by the effective implementation of Quality Management Systems and setting appropriate objectives and targets.

Middle East Block Factory About us

Middle East Block Factory is yet another manifestation of Ahmed Mansoor Al A'ali Group (AMA), dedicated to providing the construction industry with concrete products that meet the exacting demands of International and British Standards.

With over 40 years of reputation for quality, innovation and customer service, we have achieved numerous milestones in Bahrain's construction industry. We are proud of our manufacturing facility equipped with the latest technology from MASA for the production of high-end masonry concrete blocks and Concrete Pavers, and MASA – HENKE for the production of high quality Road Kerbs, Edging Kerbs, and Concrete Blocks which enable us to operate with greater flexibility leading to a wider range of products being offered to customers with a shorter delivery time. We are the approved precast concrete products supplier by the Ministry of Works.

Middle East Block Factory is the approved precast concrete products supplier for the Ministry of Works in Bahrain.

We are committed to producing high quality products and services. Being quality driven, we adhere strictly to the ISO standards, international standard specifications, latest manufacturing technology, regular quality control, checking on incoming materials, in-process inspection and final inspection on the finished products.

In 2018, we installed a new MASA (Germany) plant. This gives Middle East Block factory the biggest production capacity in Bahrain with an additional 85,000 blocks per day after installation.



Middle East Block Factory

Our Products

Product Range

- Hollow Blocks
- Solid Blocks
- Insulated Blocks
- Sandwich Blocks
- Concrete Pavers
- Road Kerbs & Edging Kerbs

CONCRETE PAVERS

Concrete Pavers are concrete units produce by Middle East Block factory. They have a wide range, different colors, shapes, and durability. They are produced according to BS EN 1338, BS EN 771 Standard, which are as per specification of Ministry of Work and Ministry of Housing.

TECHNICAL DATA

PAVER TYPE	DIMENSIONS IN MM
Rectangular	60 x 100 x 200
	80 x 100 x 200
Square	60 x 200 x 200
	80 x 200 x 200
Half	80 x 100 x 100
Classico Rusto	60 x 090 x 120
	80 x 150 x 120
	80 x 120 x 120
	80 x 090 x 120
	80 x 150 x 120
	80 x 210 x 120



COLOUR OPTIONS	<div>Black</div> <div>Red</div> <div>Grey</div> <div>Yellow</div>	Other colours and shapes are available upon request, depending on quantity requirements

CONCRETE BLOCKS

Concrete blocks are masonry unit produce by Middle East Block factory. It has different types of blocks with required compressive strength as per standards of Ministry of Works.

TECHNICAL DATA

HOLLOW BLOCKS	DIMENSIONS IN MM
Hollow Blocks	100 x 200 x 400
	090 x 190 x 390
6" Hollow Blocks	150 x 200 x 400
	140 x 190 x 390
8" Hollow Blocks	200 x 200 x 400
	190 x 190 x 390
8"1/2 Hollow Blocks	190 x 190 x 190



INSULATED BLOCKS	DIMENSIONS IN MM
8" Insulated Block Insert Type	190 x 190 x 390
	200 x 200 x 400
10" Insulated Blocks	200 x 250 x 400
12" Insulated Block	200 x 300 x 400



IMSI BLOCKS	DIMENSIONS IN MM
IMSI Blocks	200 x 200 x 400



SANDWICH BLOCKS	DIMENSIONS IN MM
Sandwich Blocks	200 x 300 x 400



SOLID BLOCKS	DIMENSIONS IN MM
Solid Blocks	200 x 200 x 400
	150 x 200 x 400
	100 x 200 x 400



ROAD KERBS & EDGING KERBS

Middle East Block factory is the manufacturer of a range of Road Kerbs & Edging Kerbs in different colors, sizes and shapes. It is produced according to BS EN 1339, and BS 7263 Standard and as per specification of Ministry of Works.

PRODUCT TYPE	DIMENSIONS IN MM
Road Kerbs	915 x 125 x 255
	915 x 150 x 305
	915 x 125 x 150
Edging Kerbs	915 x 150 x 50

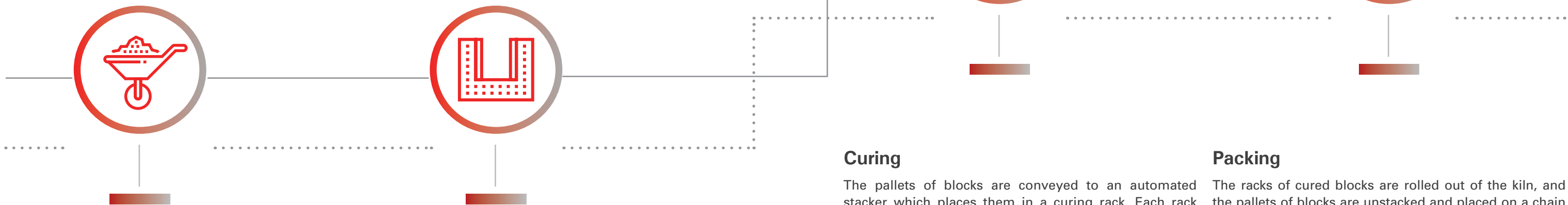




Middle East Block Factory Methodology

Block Process

Middle East Block Factory is equipped with the latest technology from MASA for the production of high-end masonry concrete blocks and Concrete Pavers, and MASA – HENKE for the production of high quality Road Kerbs, and Edging Kerbs.



Mixing

Sand and gravel are stored outside in piles and are transferred into storage bins in the plant by a conveyor belt as they are needed. The cement is stored outside in large vertical silos to protect it from moisture.

As a production run starts, the required amounts of sand, gravel, and cement are transferred by gravity or by mechanical means to a weigh batcher which measures the proper amounts of each material.

The dry materials then flow into a stationary mixer where they are blended together for several minutes.

After the dry materials are blended, a small amount of water is added to the mixer. Admixture chemicals and colouring pigments are also added at this time. The concrete is then mixed before continuing to the next stage.



Moulding

Once the load of concrete is thoroughly mixed, it is dumped into an inclined bucket conveyor and transported to an elevated hopper. The mixing cycle begins again for the next load.

From the hopper the concrete is conveyed to another hopper on top of the block machine at a measured flow rate. In the block machine, the concrete is forced downward into moulds. The moulds consist of an outer mould box containing several mould liners that determine the outer shape of the block and the inner shape of the block cavities.

When the moulds are full, the concrete is compacted by the weight of the upper mould head coming down on the mould cavities.

The compacted blocks are pushed down and out of the moulds onto a flat steel pallet. The pallet and blocks are pushed out of the machine and onto a chain conveyor.



Curing

The pallets of blocks are conveyed to an automated stacker which places them in a curing rack. Each rack holds several hundred blocks. When a rack is full, it is rolled onto a set of rails and moved into a curing kiln.



Packing

The racks of cured blocks are rolled out of the kiln, and the pallets of blocks are unstacked and placed on a chain conveyor.

The blocks pass through a cuber which aligns each block and then stacks them into a cube three blocks across by six blocks deep by three or four blocks high. These cubes are carried outside with a forklift and placed in storage.





Middle East Block Factory Services

Logistics and Delivery

Middle East Block Factory with its own fleet of trucks and trailers has the capacity to deliver materials as per customer requirements 24/7. All the vehicles are fitted with cranes for easier and faster offloading on-site. All dispatches are well planned and programmed to suit every customer's needs



GPS

All vehicles operated by Middle East Block Factory are equipped the latest GPS technology for tracking timely deliveries to customers and work effectiveness. We deliver and focus on our values of customer service.



Quality Control

At Middle East Block Factory, we are totally committed to achieving and maintaining the highest standards of quality in every area of operation from receiving the order to the delivery.



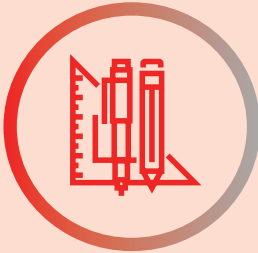
In-House Testing Laboratory

To ensure that the Middle East Block Factory continuously supplies quality products, we have an in-house state of the art and fully equipped laboratory to carry out testing of finished products. We conduct tests as per the specifications of Bahrain's Ministry of Works and Housing. Additionally, we can conduct tests to recheck the quality of any product upon the request of the customer.



Consultancy

With decades of experience in the industry, Middle East Block Factory has in-house experts with in-depth industry and product knowledge that can provide professional advice on blocks, paving, kerbs, and industry related enquiries.



Middle East Block Factory Reference Projects

A small selection of our projects.
For further information on completed or ongoing projects, please contact us directly.

Bahrain City Center	Diyar Al Muharraq
Shaikh Isa Library, Juffair	PPP Shamaliya

2017 Delivered
370,000 - m² of Paving | 100,000 - units of Kerbs | 15,000,000 - units of Blocks



Middle East Block Factory Certification



Ministry of Works

Material Compliance Report
MCR: 2486/2017

Precast Concrete Hollow
Masonry Blocks



Ministry of Works

Material Compliance Report
MCR: 2484/2017

Precast Concrete Kerbs, Edgings
and Flags



TÜV NORD

Management System
EN ISO 14001:2015

Production and Supply of Pre-cast
Concrete Blocks, Insulation Blocks
and Paving Slabs



Ministry of Works

Material Compliance Report
MCR: 2488/2017

Precast Concrete Hollow Masonry
Insulation Blocks



Ministry of Works

Material Compliance Report
MCR: 2485/2017

Precast Concrete Paving Blocks



TÜV NORD

Management System
EN ISO 9001:2015

Production and Supply of Pre-cast
Concrete Blocks, Insulation Blocks
and Paving Slabs

Ahmed Mansoor Al A'ali Co. BSC®
Middle East Block Factory
P. O. Box: 778, Building 13 ,Gate 1347
Road 5225, Ras Zuwyed 952
Kingdom of Bahrain

Tel: 00973-17830777
Fax: 00973-17830802
amablock@al-aali.com

www.amabuildingmaterials.com



Middle East Ice and Sweet Water Plant



Quality Policy Statement

Middle East Ice and Sweet Water Plant is dedicated to the continual improvement and maintaining high levels of customer satisfaction.

We are fully committed to consistently meeting our customer expectations and providing the highest quality of service in all our activities related to the supply of Ice and Sweet Water through:

Providing the most cost effective and efficient services, and constantly looking at ways and means of improving the quality of our products and services.

Establishing, measuring, and reviewing our Quality Management System as a continual improvement process.

Competent and professional staff who are provided with continuous training.

The above commitment shall be achieved by the effective implementation of Quality Management Systems and setting appropriate objectives and targets.

Middle East Ice and Sweet Water Plant About us

Since inception in 2002, Middle East Ice & Sweet Water Plant has been uniquely positioned as the largest water processing company with two water plants and an ice factory having production capacity of 1.6 million US Gallons of water per day & 2000 ice blocks per day.

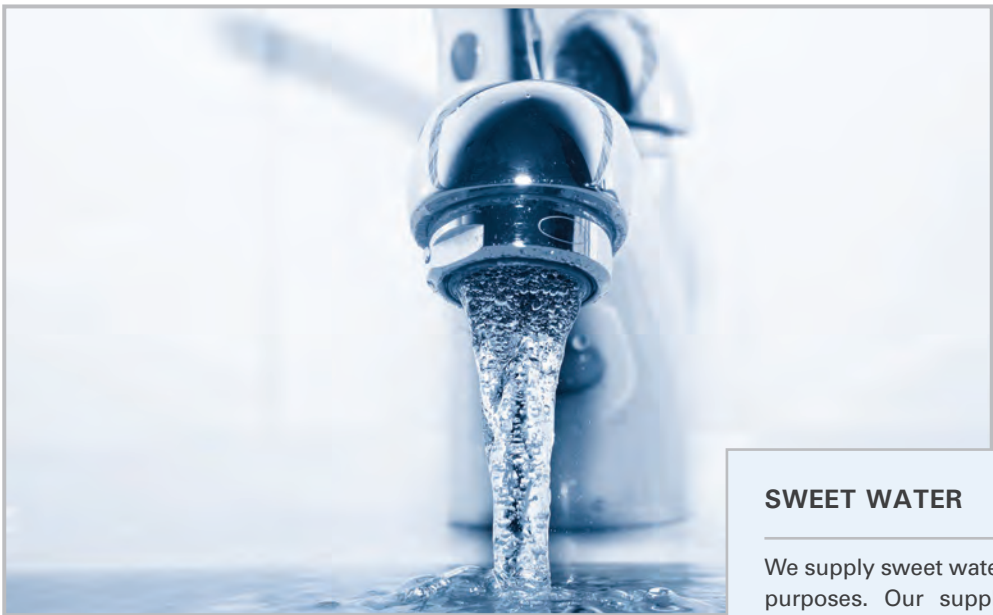
The fully automated reverse osmosis water treatment plants have been manufactured to the highest US specifications. The plant output (minimum 95% operational) is the finest in Kingdom of Bahrain, backed up by our vast storage capacity and a proficient tanker fleet, which ensures availability of water 24 hrs a day.

Commitment to Quality: We are committed to quality and certified to comply with ISO 9001:2008 and HACCP standards.

Production Methodology: Production follows United States Specifications, World Health Organization (WHO) water quality guidelines, and Government of Bahrain's standards 149/1993 for non-bottled drinking water.

Middle East Ice and Sweet Water Plant

Our Products

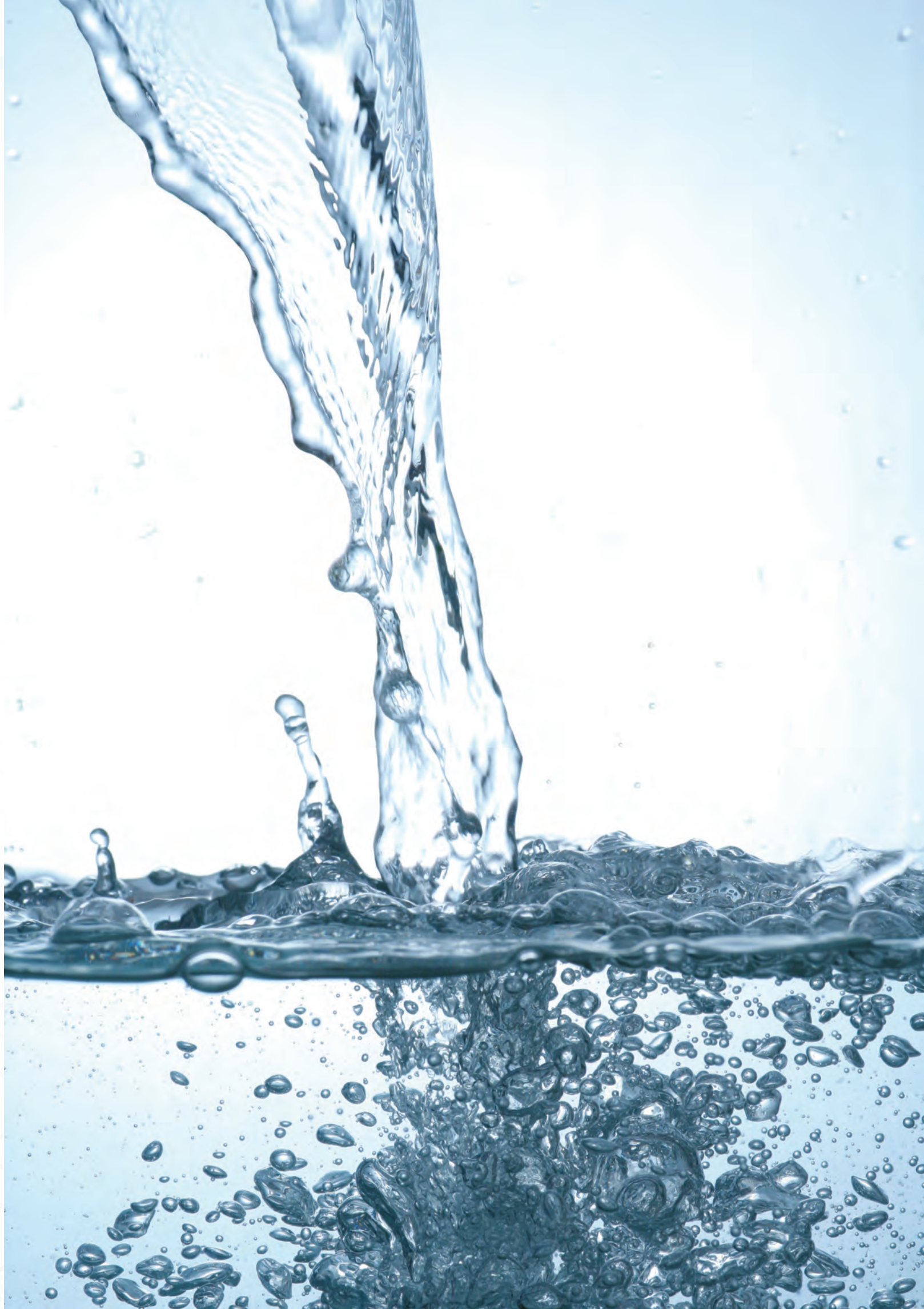
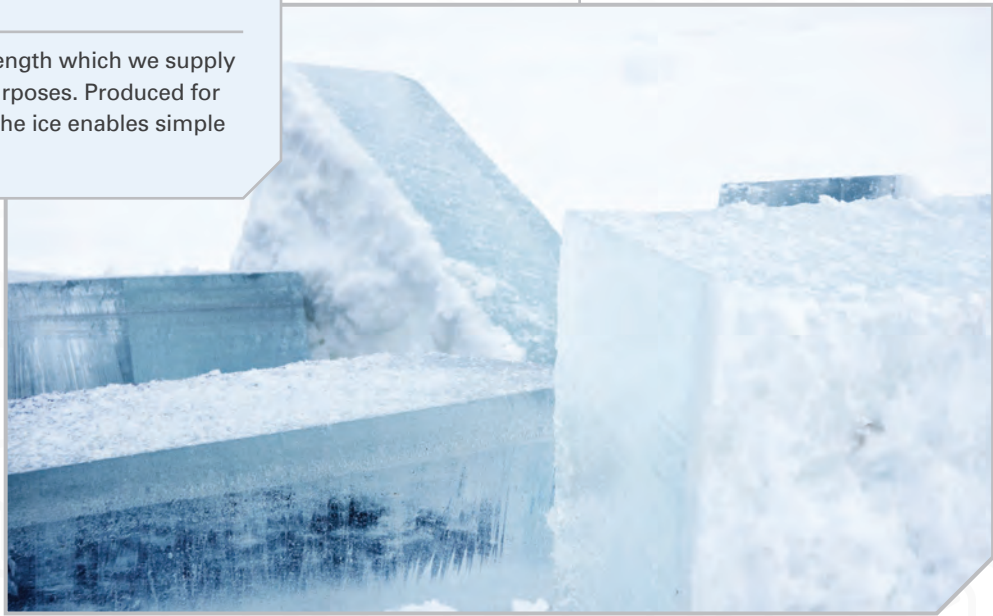


SWEET WATER

We supply sweet water for both industrial and domestic purposes. Our supply of drinking sweet water is hygienically treated and tested for quality as per the US quality specifications and GCC quality standards. Since dissolved minerals may affect suitability of water for a range of industrial and domestic purposes, we monitor water quality from time to time to ensure compliance.

ICE BLOCKS

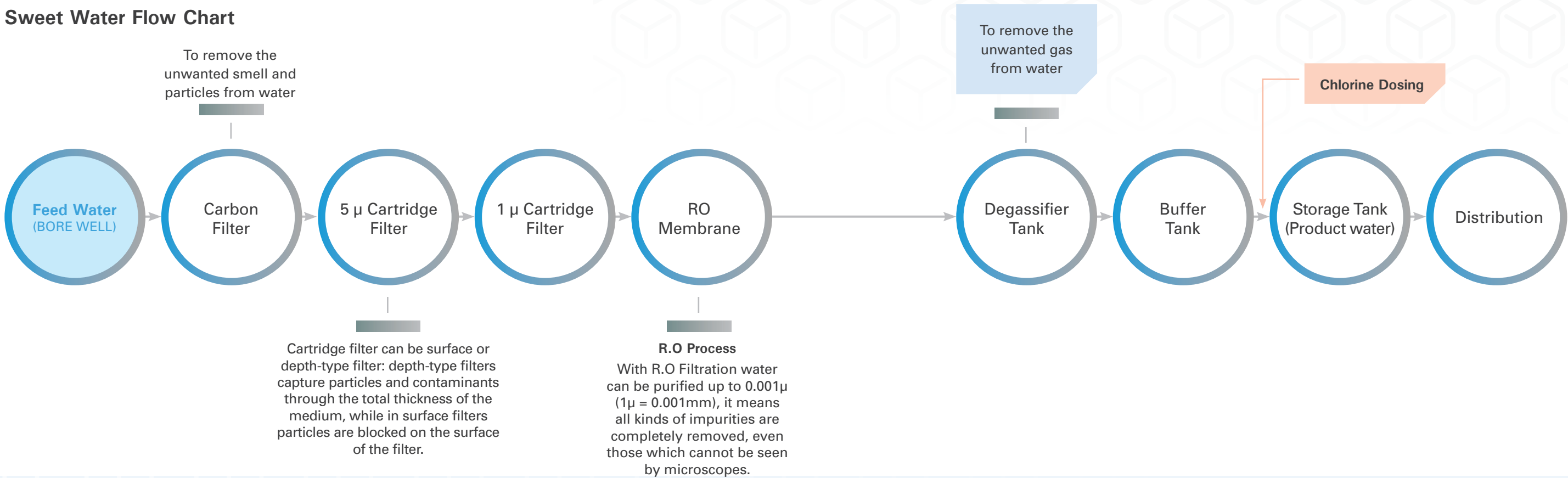
We produce ice blocks of 1 meter length which we supply for both industrial and domestic purposes. Produced for versatility, the rectangular shape of the ice enables simple cutting and crushing.



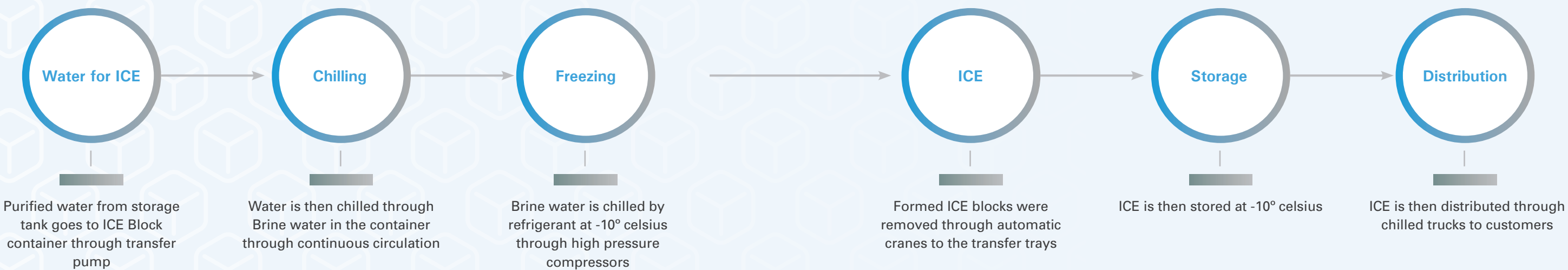
Middle East Ice and Sweet Water Plant

Methodology

Sweet Water Flow Chart



ICE Plant Flow Chart



Middle East Ice and Sweet Water Plant Services

Logistics and Delivery

Middle East Ice and Sweet Water Plant with its own fleet of trucks and trailers has the capacity to deliver materials as per customer requirements round the clock. All the vehicles are equipped for easier and faster offloading at site. All dispatches are well planned and programmed to suit every customer's needs.



GPS

We have the GPS set-up for tracking timely deliveries to customers, and work effectiveness. We deliver and focus on our values of customer service.



Quality Control

At Middle East Ice and Sweet Water Plant, we are totally committed to achieving and maintaining the highest standards of quality in every area of operation from receiving the order to the delivery.



Ice Crushing

Understanding the necessity of this service, we newly introduced this facility at our plant. We extend this service free of charge to our valued clients upon request.



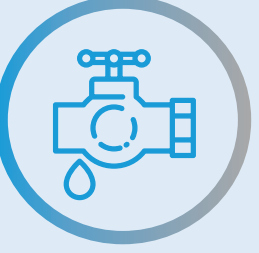
In-House Testing Laboratory

The Middle East Ice and Sweet Water Plant has it's own in-house laboratory for testing water upon customer request.



Water Supply 24/7

To provide maximum satisfaction to our customers, we supply water 24 hours, 7 days a week, according to our customer's demand.



Middle East Ice and Sweet Water Plant

Clients

Client List

A selection of prestigious client that we have the pleasure of working with.

Middle East Ice and Sweet Water Plant

Certification



TÜV NORD

Management System
EN ISO 9001:2015

Production and Supply
Bottled Drinking Water (Myna),
Treatment & Supply of Potable
Drinking Water, Manufacture &
Distribution of Ice



TÜV NORD

Management System
EN ISO 22000:2015

Fabrication and Supply
Bottled Drinking Water (Myna),
Treatment & Supply of Potable
Drinking Water, Manufacture &
Distribution of Ice

Ahmed Mansoor Al A'ali Co. BSC©
Middle East Ice & Sweet Water Plant
P. O. Box: 778, Building 533, Gate 1
Road 4311, Mina Salman
Kingdom of Bahrain

Tel: 00973-1616 6603
Fax: 00973-1772 8050
amawater@al-aali.com

www.amabuildingmaterials.com



Section 05

Middle East Sand Washing and Crusher Plant



**Ahmed
Mansoor
Al Aali**
Group

Quality Policy Statement

Middle East Sand Washing and Crusher Plant is dedicated to the continual improvement and maintaining high levels of customer satisfaction.

We are fully committed to consistently meeting our customer expectations and providing the highest quality of service in all our activities related to the supply of Road base, Sub base, Fillings, Crusher aggregates of different sizes, Double Washed Sand, and Unwashed Sand through:

Providing the most cost effective and efficient services, and constantly looking at ways and means of improving the quality of our products and services.

Establishing, measuring, and reviewing our Quality Management System as a continual improvement process.

Competent and professional staff who are provided with continuous training.

The above commitment shall be achieved by the effective implementation of Quality Management Systems and setting appropriate objectives and targets.

Middle East Sand Washing and Crusher Plant About us

Middle East Sand washing and Crusher Plant is yet another manifestation of AMA Group. The Middle East Sand Washing and Crusher Plant is the largest Sand Washing and Crushing plant in the Kingdom of Bahrain, producing a wide range of high quality washed sands, aggregates and crusher products to support the island's construction industry in block manufacturing, land reclamation, roads, back filling, and other works.

Boasting the latest machinery from Europe and North America, we are capable of producing more than 5,000 tons of graded products per day.

The Middle East Sand Washing and Crusher Plant's approach to providing professional solutions is based on a combination of quality products, competitive prices, and delivering the best service at all times.

Middle East Sand Washing and Crusher Plant

Our Products

Product Range

MIXED PRODUCT

- Road Base - (Class-1)
- Modified Subbase - Type A
- Desert Filling (Type - B)
- Type - B Filling
- Subbase Type A (Mixed)
- Subbase Type A (Mixed + Water)

DIRECT PRODUCT

- Crusher Dust
- Crusher Filling - Type B
- Aggregate 10 Mm
- Aggregate 14 To 20 Mm Down
- Aggregate 25 To 30 Mm – Down
- Aggregate 40 Mm
- Aggregate 50 To 63Mm
- Aggregate 75 Mm To 200Mm Down
- Desert Filling (Class-3)
- Filling Class C



AGGREGATE 14 TO 20 MM

Local Lime stone boulders are crushed and screened in our crusher located in Hafeera.



AGGREGATE 40 MM

Local Lime stone boulders are crushed and screened in our crusher located in Hafeera.



AGGREGATE 50 TO 63MM

Local Lime stone boulders are crushed and screened in our crusher located in Hafeera.



DESERT FILLING (CLASS-3)

Is a combination of aggregate 75mm down + aggregate 40mm down + aggregate 20mm down and crusher dust.



CRUSHER DUST

Local Dust is a by product of Local aggregate crushing. Local dust can be used in filling in combination with bigger aggregated in different time of soil fills



ROAD BASE - (CLASS-1)

Is a combination of local aggregate 10mm + aggregate 20mm + aggregate 40mm + washed sand and crusher Dust to provide required grading envelope as required by the ministry specifications.



SUBBASE TYPE A (MIXED)

Is a combination of local aggregate 10mm + 20mm + 40mm and crusher Dust to provide required grading envelope as required by the ministry specifications.



AGGREGATE 10 MM

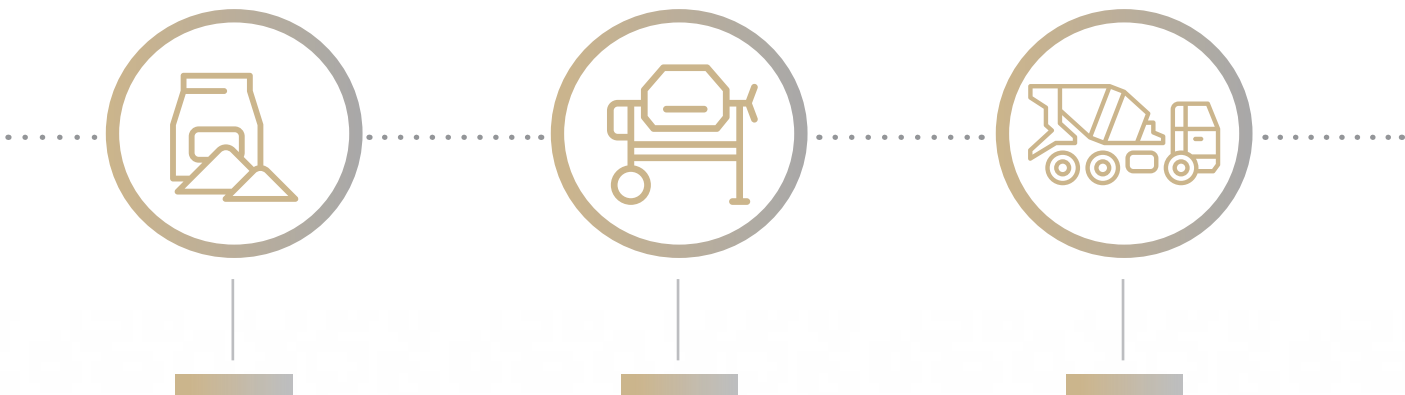
Local Lime stone boulders are crushed and screened in our crusher located in Hafeera.

Middle East Sand Washing and Crusher Plant Methodology

Sand Washing

Middle East Sand Washing Plant is the largest Sand Washing Plant producing a wide range of high quality sand products. Our Factory installed Machines for washing sand from Germany to produce 3,000 tons per day and manufactured to British Standards BS 1377, ensuring the highest standards of material and production quality.

Further, for smooth and efficient execution of production process, we are backed by a team of Maintenance Manager, Supervisor, Foremen, Expert Machine Operators and other technical staff who are qualified and well trained.



Raw Material

Raw Materials used for Sand Washing is Dredged Unwashed Sand, which is purchased from various dredging companies.

Production Execution

With the largest Sand Washing Machines in operation, comes the realization part under extensive and strict supervision of the production department and concurrent quality control adhering to British Standards BS 1377 without any compromise in quality.

Our Sand Washing Factory works in two shifts, round the clock having a production capacity of over 3,000 tons per day.

Order Execution

As per customers requirement schedules, the same is processed in the production planning to increase the production as per ministry standard specification.



Crusher

Middle East Crusher Plant is the largest Crusher Plant producing various size of Aggregates and various Class Filling Materials. Our Factory installed SBM Crusher from Germany to produce 5,000 tons per day and manufactured to British Standards BS 1377/BS 812, ensuring the highest standards of material and production quality.

Further, for smooth and efficient execution of production process, we are backed by a team of Maintenance Manager, Supervisor, Foremen, Expert Machine Operators and other technical staff who are qualified and well trained.



Raw Material

Raw Materials used for crushing is Screened Rocks, which is purchased from National Quarry of Bahrain.

Production Execution

With the largest SBM Crushing Machines in operation, comes the realization part under extensive and strict supervision of the production department and concurrent quality control adhering to British Standards BS 1377/BS 812 without any compromise in quality.

Our Crusher Factory works in two shifts, round the clock having a production capacity of over 5,000 tons per day.

Order Execution

As per customers requirement schedules, the same is processed in the production planning, such as direct production from machine and mixed production as per ministry standard specification.



Middle East Sand Washing and Crusher Plant Services

Logistics and Delivery

Middle East Sand Washing and Crusher Plant with its own fleet of trucks and trailers has the capacity to deliver materials as per customer requirements around the clock. All the vehicles are fitted with cranes for easier and faster offloading on-site. All dispatches are well planned and programmed to suit every customers needs.

GPS

We have the GPS set-up for tracking timely deliveries to customers and work effectiveness. We deliver and focus on our values of customer service.



Laboratory Tests And Quality Control

To ensure a continuous supply of quality products, we deal with laboratories recognized and approved by The Kingdom of Bahrain's Government. We provide lab test reports for each product as per the request of the customer.

At Middle East Sand Washing and Crusher Plant, we are totally committed to achieving and maintaining the highest standards of quality in every area of operation from receiving the order to the delivery.



Excavation Material Disposal

We provide excavation material disposal services. The Middle East Sand Washing and Crusher Plant team uses top of the line machinery to perform these services with precision and professionalism.



Middle East Sand Washing and Crusher Plant Reference Projects

Project List

A small selection of our projects.

For further information on completed or ongoing projects, please contact us directly.

Bahrain International Circuit, Formula 1 – Zallaq
Khalifa Bin Salman Port – Hidd
Sh. Khalifa bin Salman Highway – Hamad Town
Bahrain Financial Harbour – Manama
Amwaj Islands

Durrat Al Bahrain
Al Madina Al Shamaliya – Budaiya
ALBA Line 6 Expansion
Tatweer Petroleum
Diyar Al Muharraq



Middle East Sand Washing and Crusher Plant Certification



International Laboratory Services

Particle Size Distribution Report
F/AGG/02/TR

Aggregate (10mm)



International Laboratory Services

Particle Size Distribution Report
F/AGG/02/TR

Aggregate (30mm Down)



International Laboratory Services

Particle Size Distribution Report
F/SOIL/22/TR

Desert Fill (Class 3)



International Laboratory Services

Particle Size Distribution Report
F/AGG/02/TR

Aggregate (14mm)



International Laboratory Services

Particle Size Distribution Report
F/AGG/02/TR

Aggregate (40mm Down)



International Laboratory Services

Particle Size Distribution Report
F/SOIL/22/TR

Hard Core (100mm Down)



International Laboratory Services

Particle Size Distribution Report
F/AGG/02/TR


Aggregate (20mm)



International Laboratory Services

Particle Size Distribution Report
F/SOIL/22/TR

Crush Dust (Class 6)



Al Hoty Analytical Services W.L.L.

Sieve Analysis Report
SR-180221/1825

Double Wash Sand

Ahmed Mansoor Al A'ali Co. BSC®
Middle East Crusher Plant
P. O. Box: 778, Building 13 ,Gate 1347
Road 5225, Ras Zuwyed 952
Kingdom of Bahrain

Tel: 00973-77121018
Fax: 00973-77121017
amacrusher@al-aali.com

www.amabuildingmaterials.com